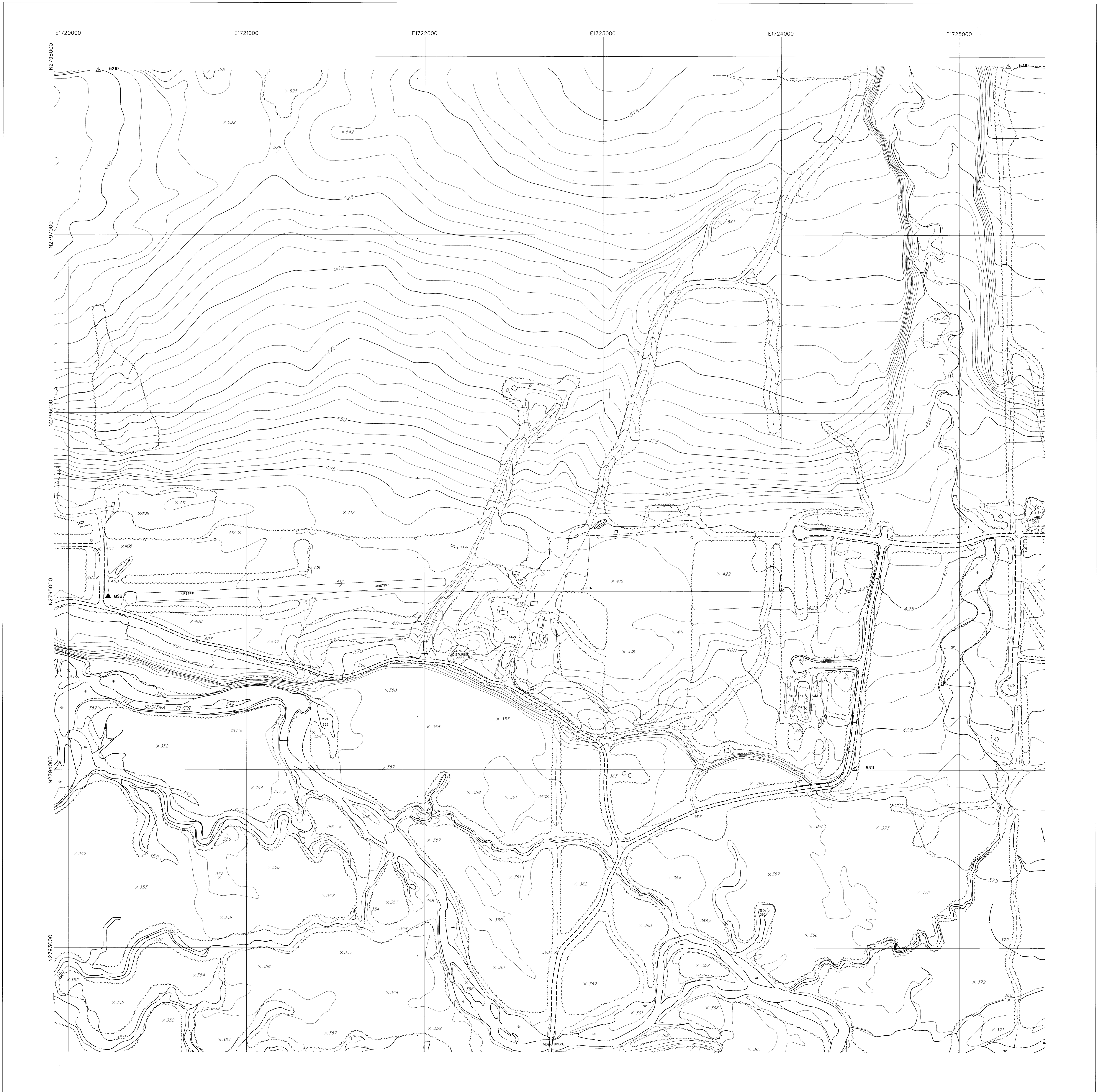


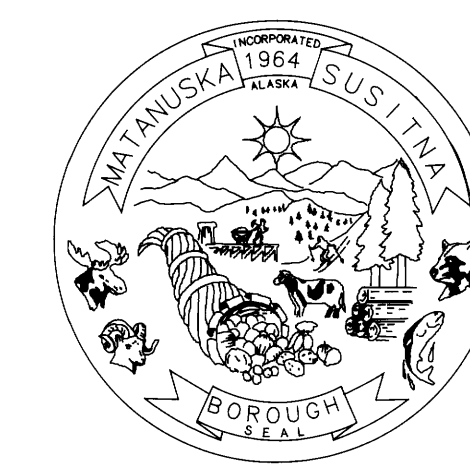
MATANUSKA-SUSITNA BOROUGH
PALMER, ALASKA



COMPILED BY PHOTOGRAMMETRIC METHODS
FROM AERIAL PHOTOGRAPHS TAKEN APRIL, 1986.
THIS MAP IS COMPILED TO NATIONAL MAP
ACCURACY STANDARDS BY AIR SURVEY AND
DESIGN, INC., HERNDON, VIRGINIA.

SCALE: 1 INCH = 200 FEET
1000 GRID: ALASKA COORDINATE SYSTEM
ZONE A (TRANSVERSE MERCATOR)
CONTOUR INTERVAL 5 FEET

GRID NORTH



MAPSHEET T18NR01W18

NOTICE

The Matanuska-Susitna Borough assumes no responsibility for completeness or accuracy of information contained within. There are no warranties or representations expressed or implied that these maps are accurate or suitable for any particular purpose. The Borough assumes no responsibility whatsoever for the information contained on these maps and persons relying on such information do so at their own risk.

The Matanuska-Susitna Borough reserves sole rights to reproduce, duplicate or otherwise distribute copies of these maps.