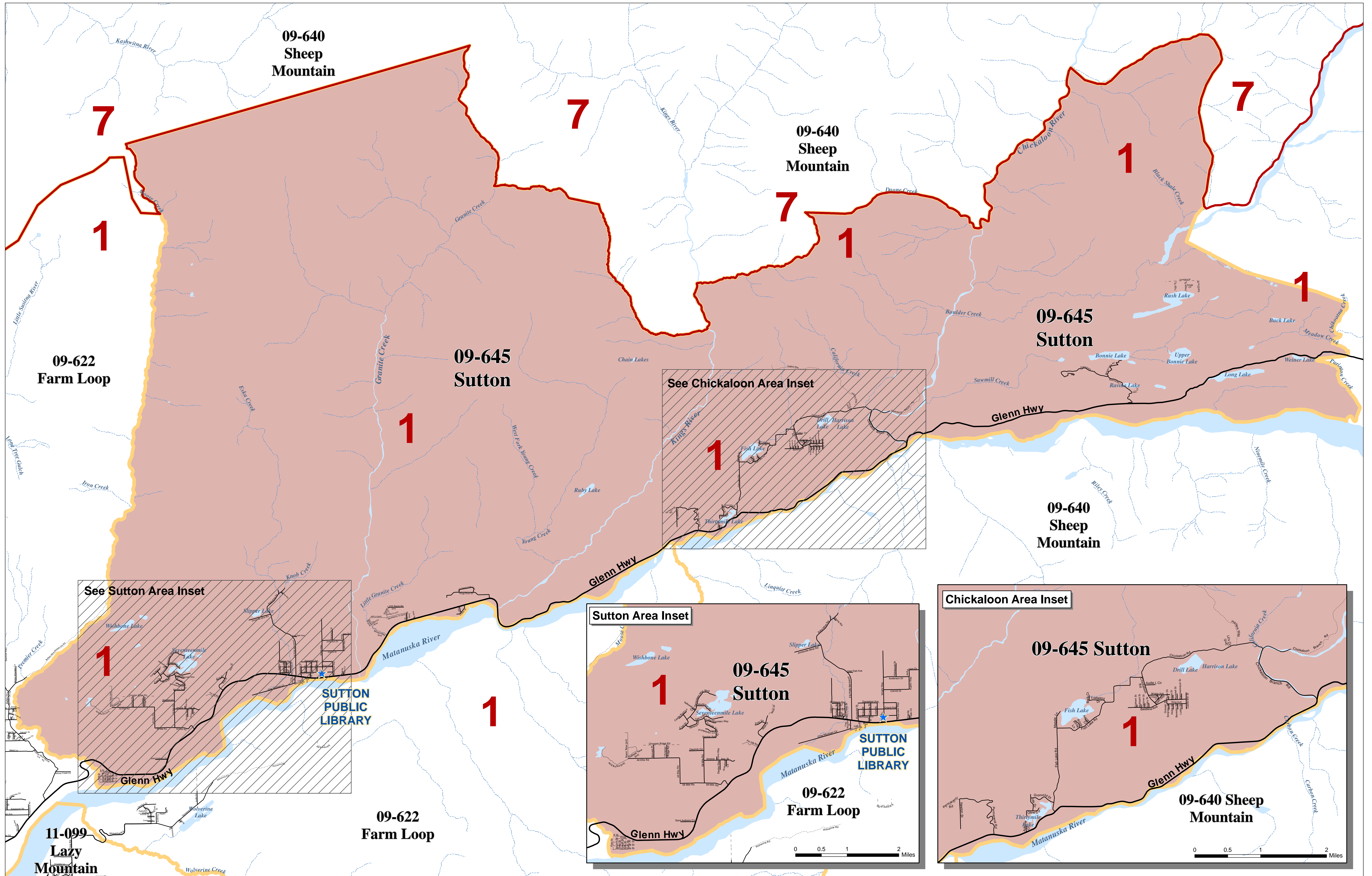
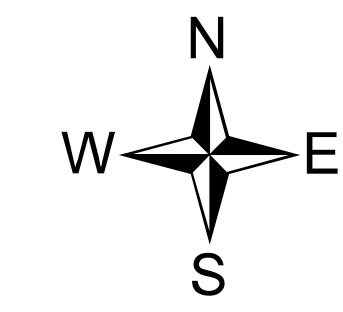




Matanuska - Susitna Borough Voting Precincts



- Polling Location
- Highway
- City Boundaries
- Assembly District and School Board Boundaries
- Voting Precinct Boundaries
- Major
- Medium
- Minor
- Private
- Primitive
- Not Constructed
- Railroad

Precinct # 09-645 Sutton

Poll Location:
SUTTON PUBLIC LIBRARY
 11301 N. Chickaloon Way



Prepared by MSB
 IT Department - GIS Division
 Data Sources: Matanuska-Susitna Borough
 State of Alaska Division of Elections
 September 2021