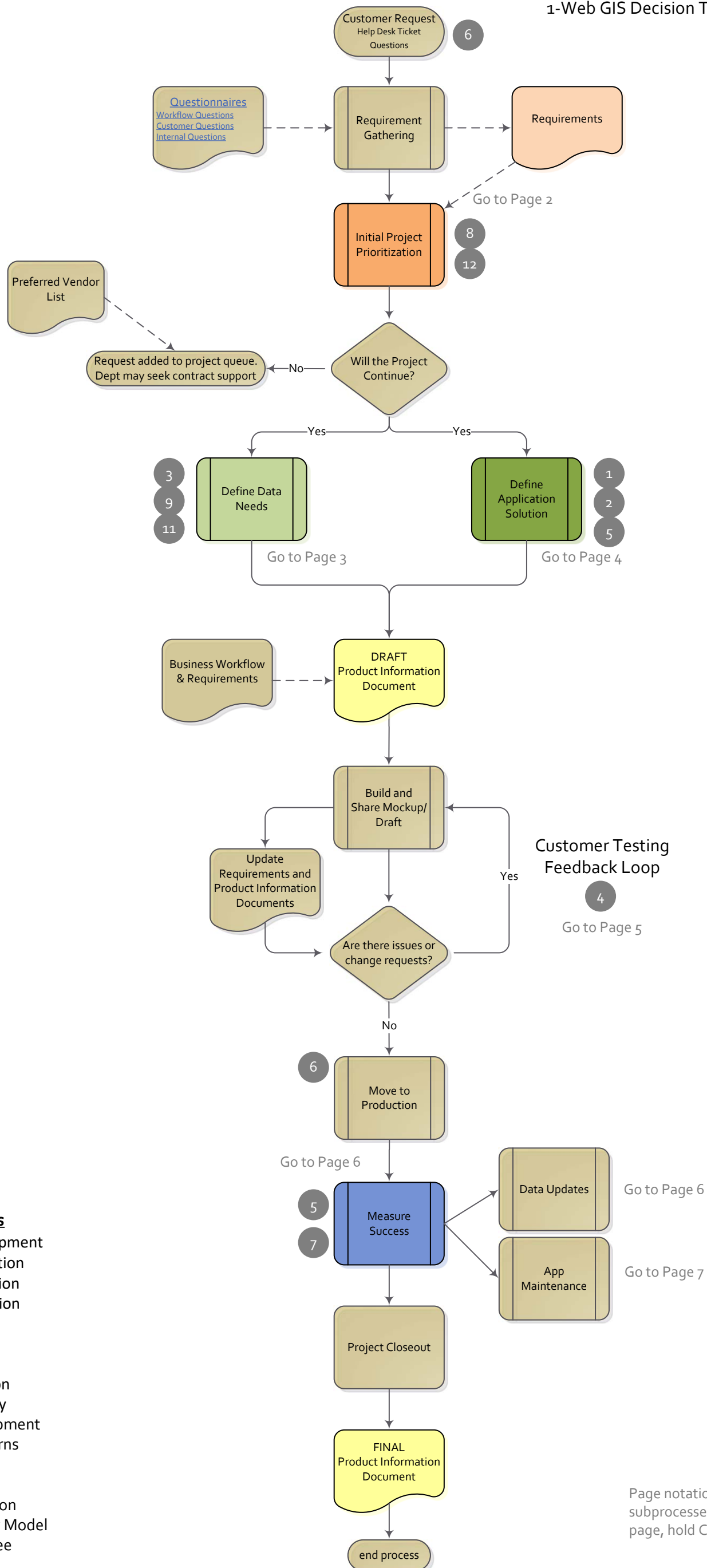


# Matanuska-Susitna Borough Web GIS Decision Tree

Click here to open an Excel document that contains detailed explanations of each subprocess step titled 1-Web GIS Decision Tree Subprocesses.



## Best Practices

1. Application Development
2. Portal Implementation
3. Enterprise Integration
4. Environment Isolation
5. High Availability
6. IT Governance
7. Load Balancing
8. Project Prioritization
9. Publication Strategy
10. Workforce Development
11. GIS Business Patterns
12. Identity
13. Security
14. Workload Separation
15. Smart Community Model
16. Web GIS Committee

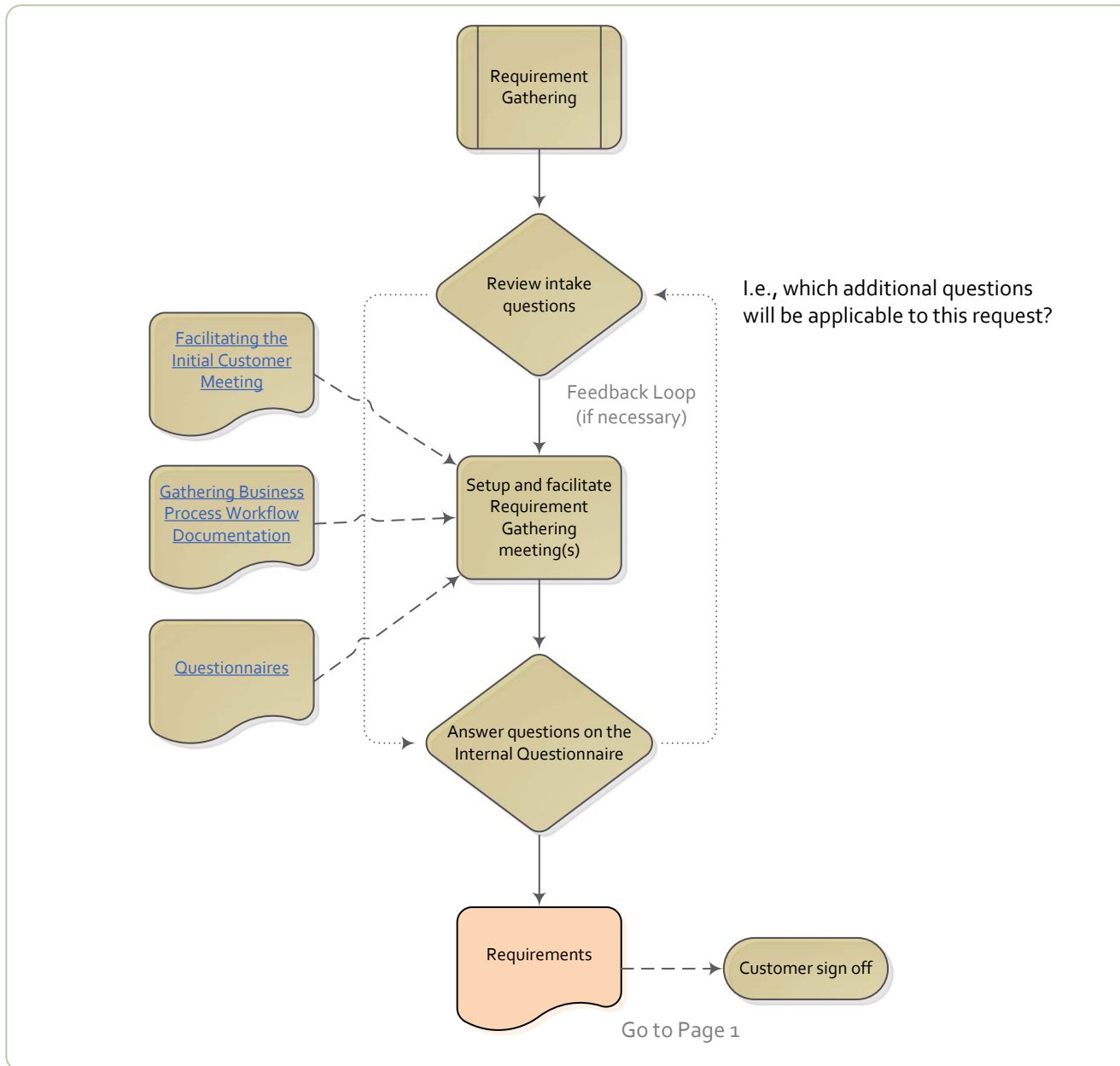
\*While most Best Practices can be applied to subprocesses there are others where the decision about the best path forward for MSB has been made for the analyst prior to beginning this decision tree, therefore not all numbers will be applied in this document.

Page notations provide additional detail on subprocesses and are clickable (i.e., will go to the page, hold Ctrl and click the text).

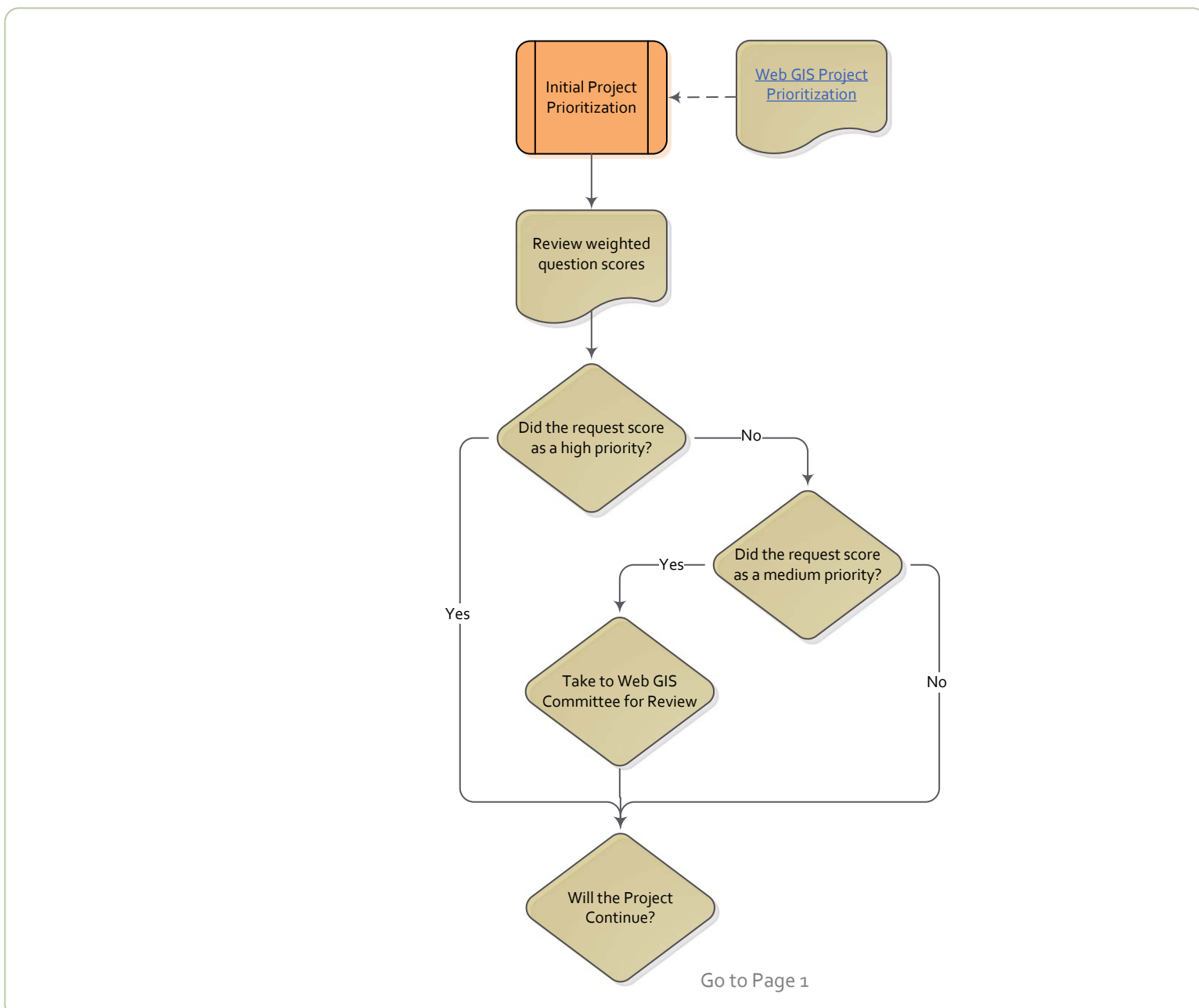
A shape with color shading indicates where the Questionnaire answers will aid with decisions.

# Matanuska-Susitna Borough Web GIS Decision Tree

## Requirements Gathering Subprocess

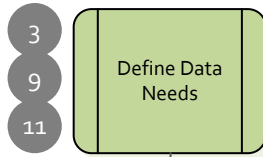


## Initial Project Prioritization Subprocess



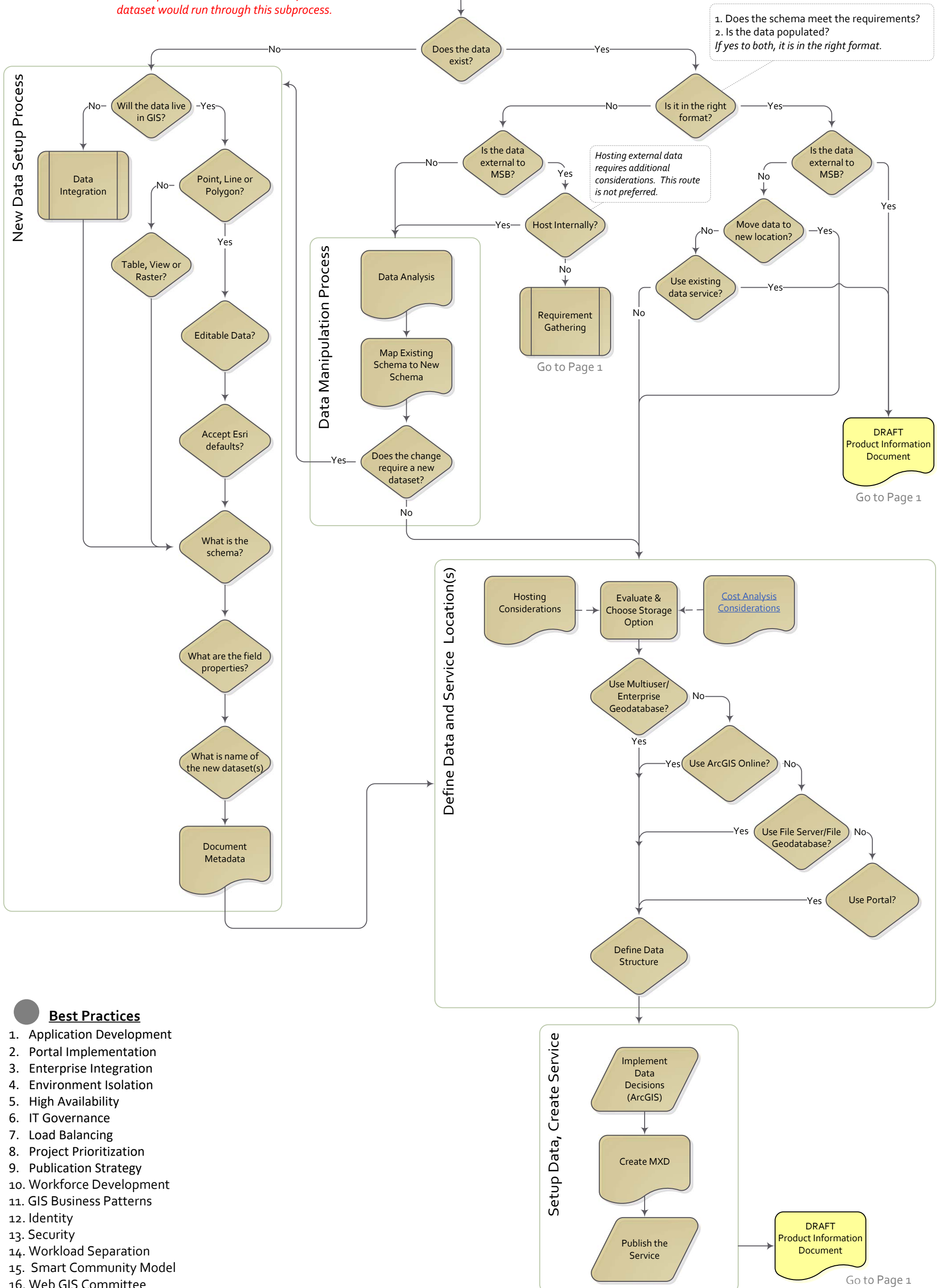
# Matanuska-Susitna Borough Web GIS Decision Tree

## Define Data Needs Subprocess



Click here to open an Excel document that contains detailed explanations of each subprocess step titled 1-Web GIS Decision Tree Subprocesses.

*This subprocess is iterative in nature, so each dataset would run through this subprocess.*



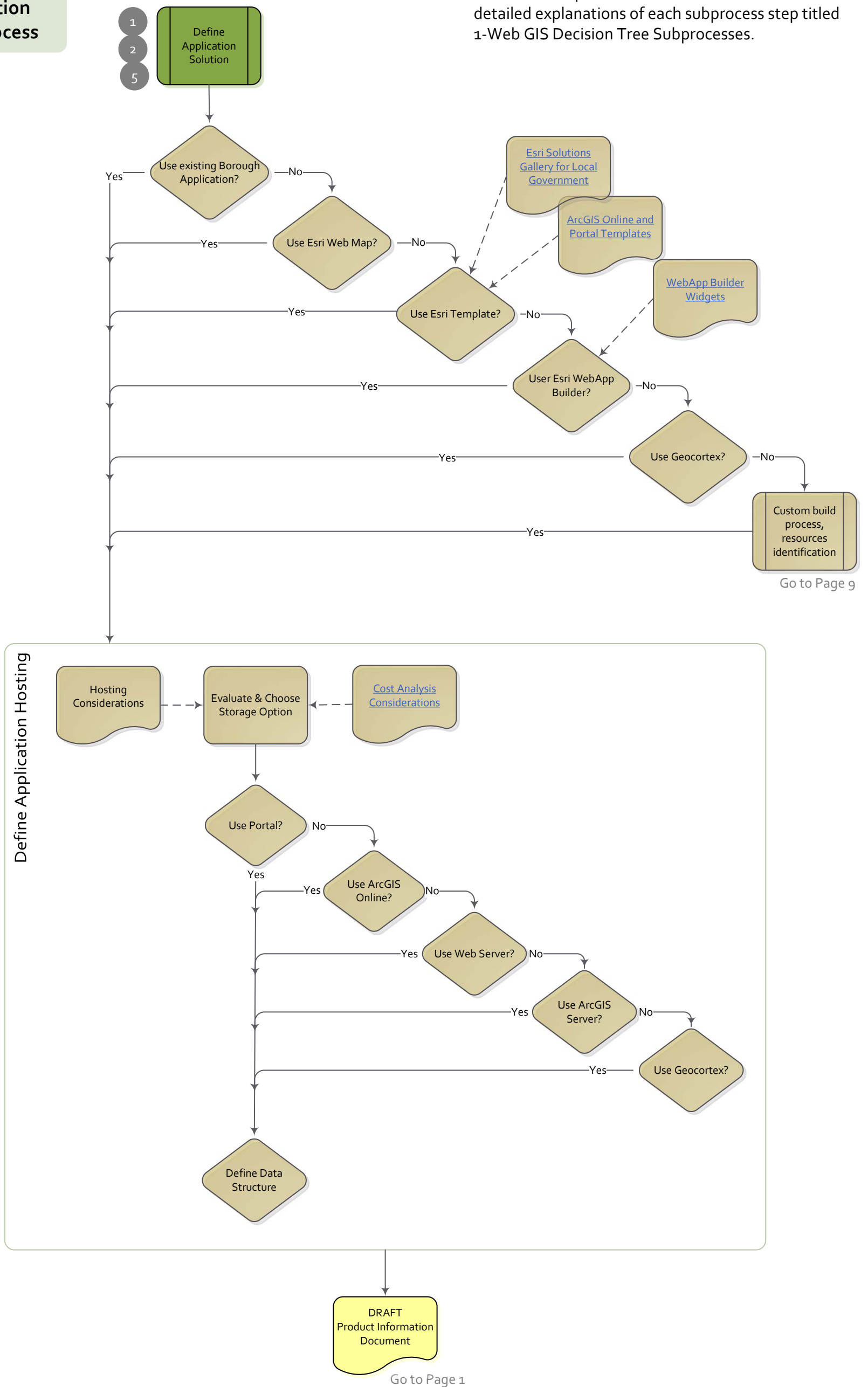
### Best Practices

1. Application Development
2. Portal Implementation
3. Enterprise Integration
4. Environment Isolation
5. High Availability
6. IT Governance
7. Load Balancing
8. Project Prioritization
9. Publication Strategy
10. Workforce Development
11. GIS Business Patterns
12. Identity
13. Security
14. Workload Separation
15. Smart Community Model
16. Web GIS Committee

# Matanuska-Susitna Borough Web GIS Decision Tree

Click here to open an Excel document that contains detailed explanations of each subprocess step titled 1-Web GIS Decision Tree Subprocesses.

## Define Application Solution Subprocess



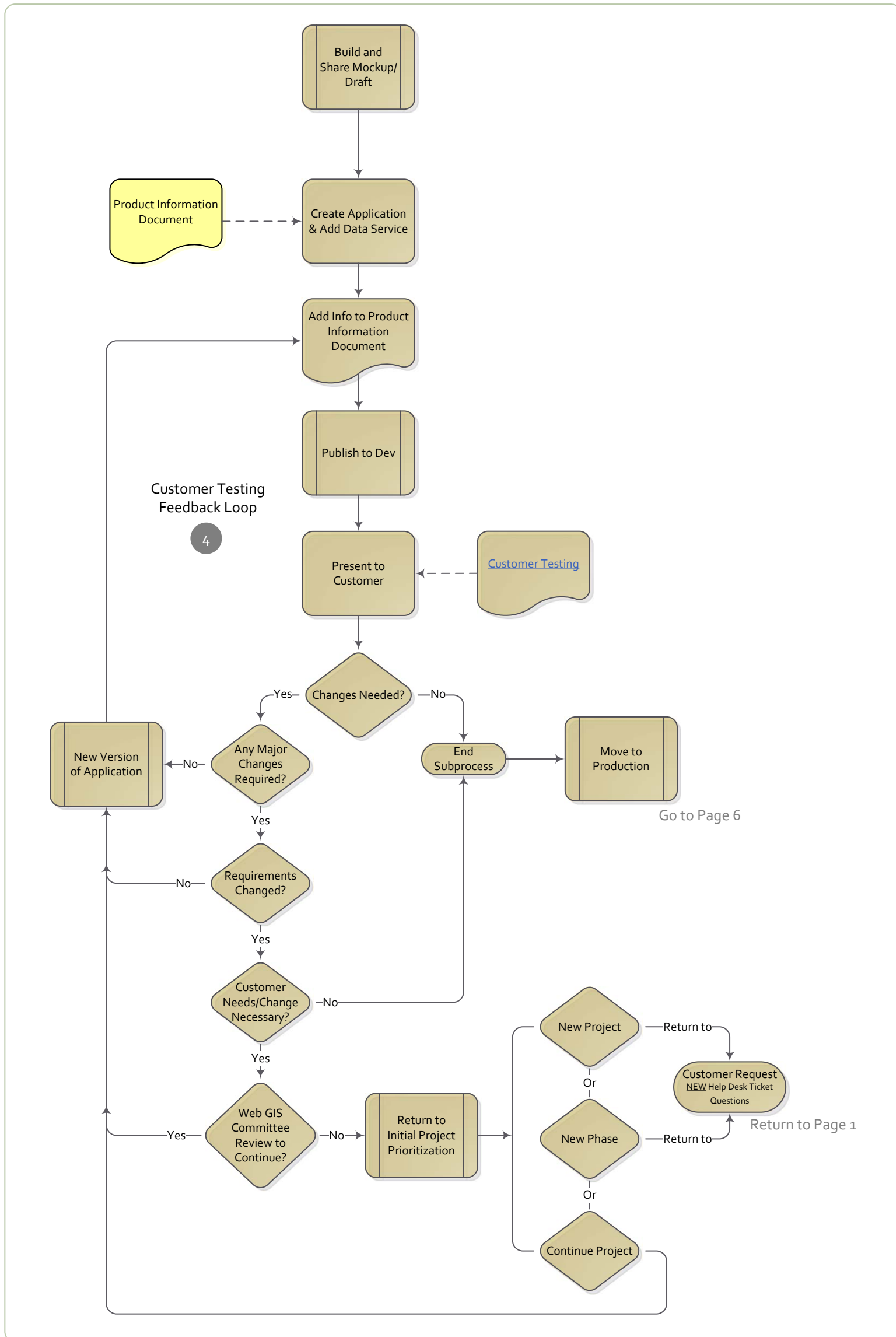
### Best Practices

1. Application Development
2. Portal Implementation
3. Enterprise Integration
4. Environment Isolation
5. High Availability
6. IT Governance
7. Load Balancing
8. Project Prioritization
9. Publication Strategy
10. Workforce Development
11. GIS Business Patterns
12. Identity
13. Security
14. Workload Separation
15. Smart Community Model
16. Web GIS Committee

# Matanuska-Susitna Borough Web GIS Decision Tree

**Build and Share Mockup/  
Draft Subprocess**

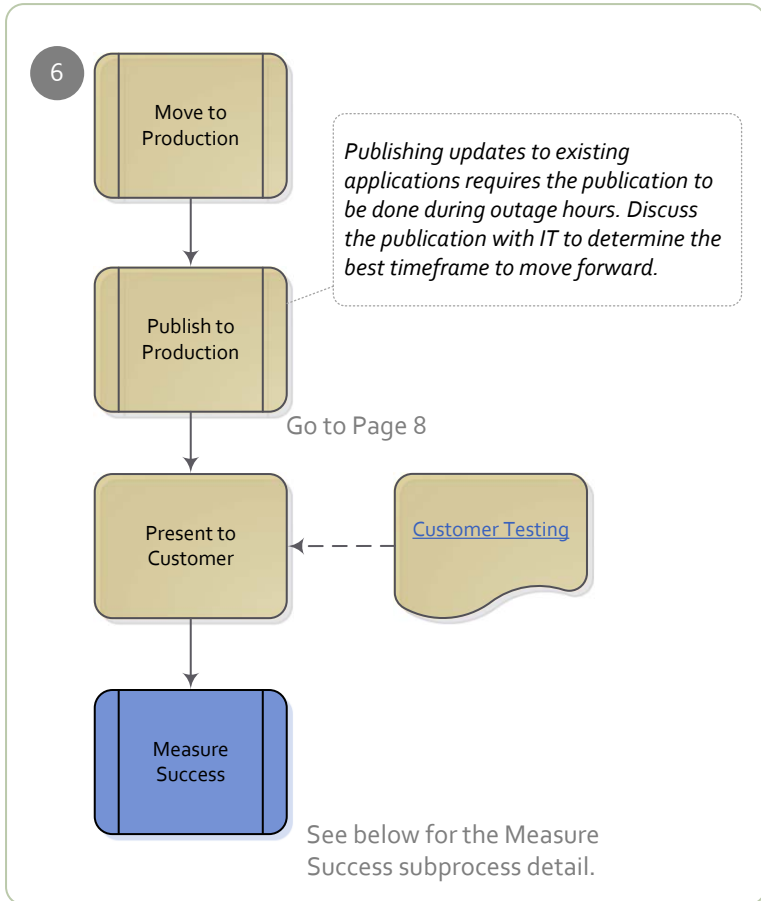
Click here to open an Excel document that contains detailed explanations of each subprocess step titled 1-Web GIS Decision Tree Subprocesses.



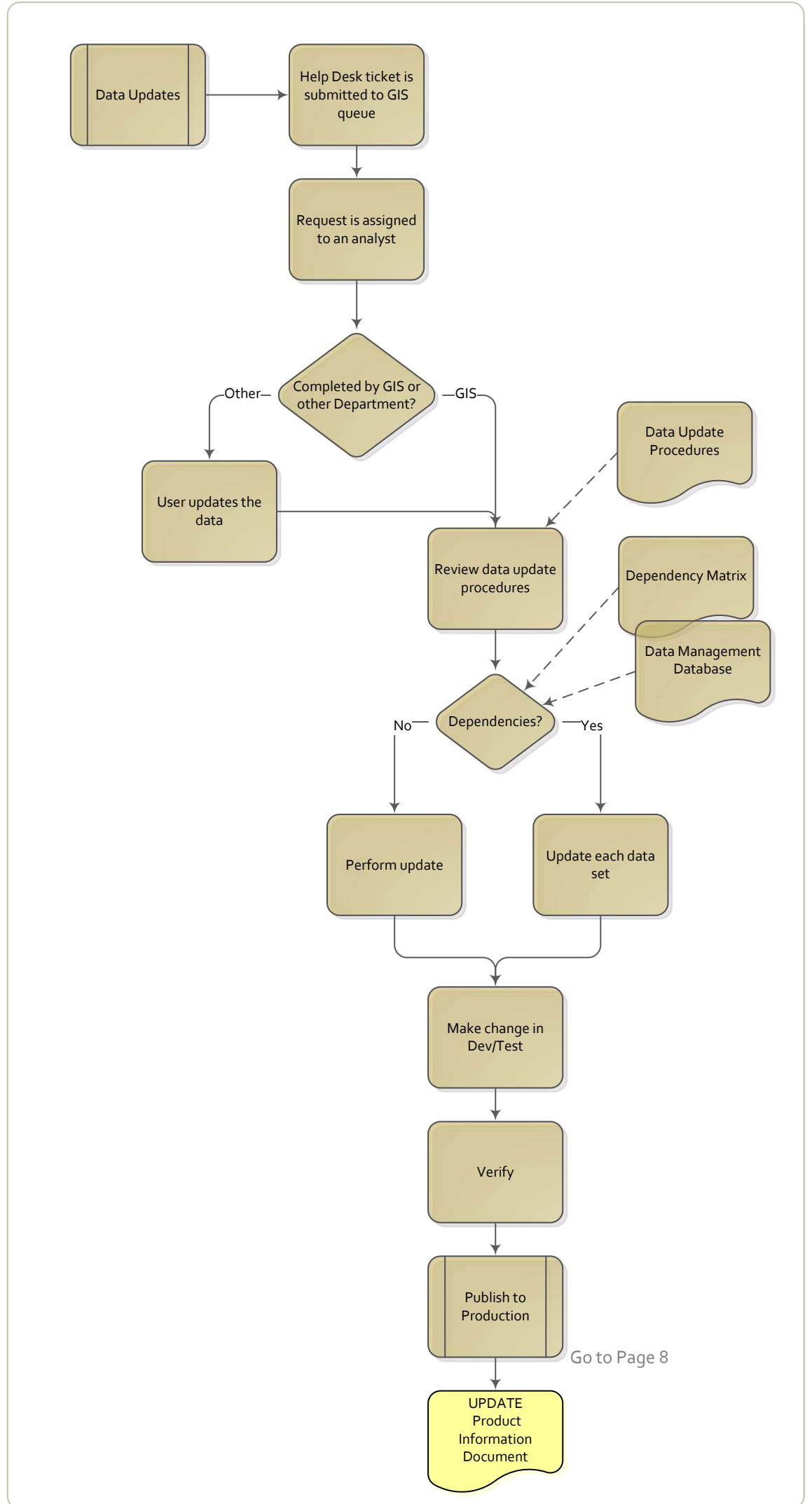
## Best Practices

1. Application Development
2. Portal Implementation
3. Enterprise Integration
4. Environment Isolation
5. High Availability
6. IT Governance
7. Load Balancing
8. Project Prioritization
9. Publication Strategy
10. Workforce Development
11. GIS Business Patterns
12. Identity
13. Security
14. Workload Separation
15. Smart Community Model
16. Web GIS Committee

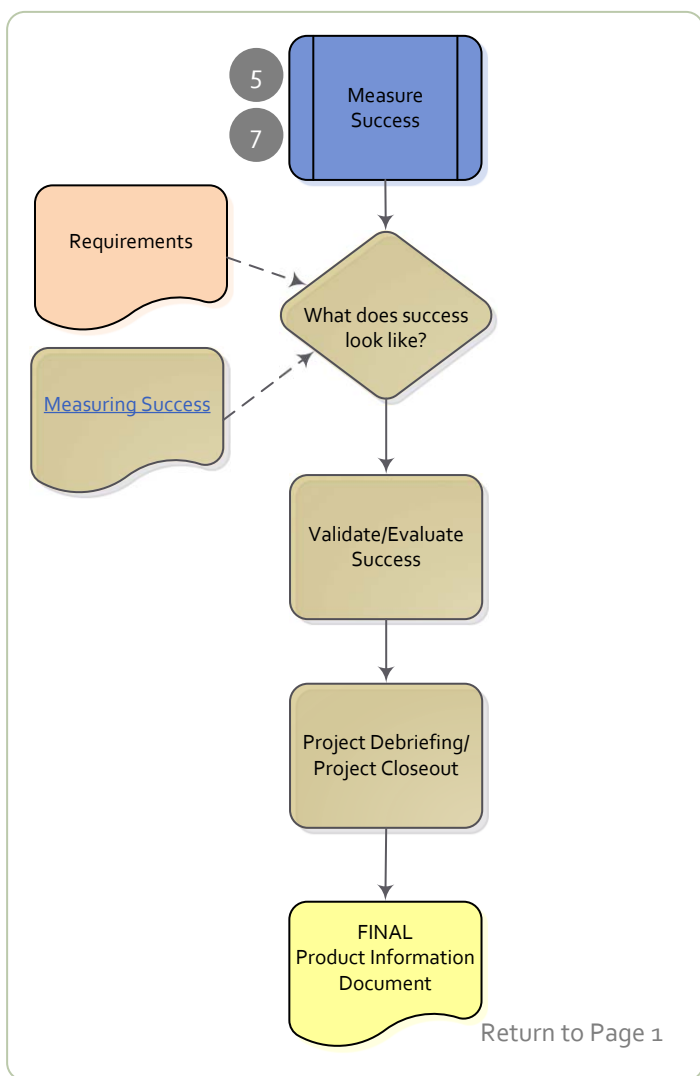
## Move to Production Subprocess



## Data Updates Subprocess



## Measuring Success Subprocess



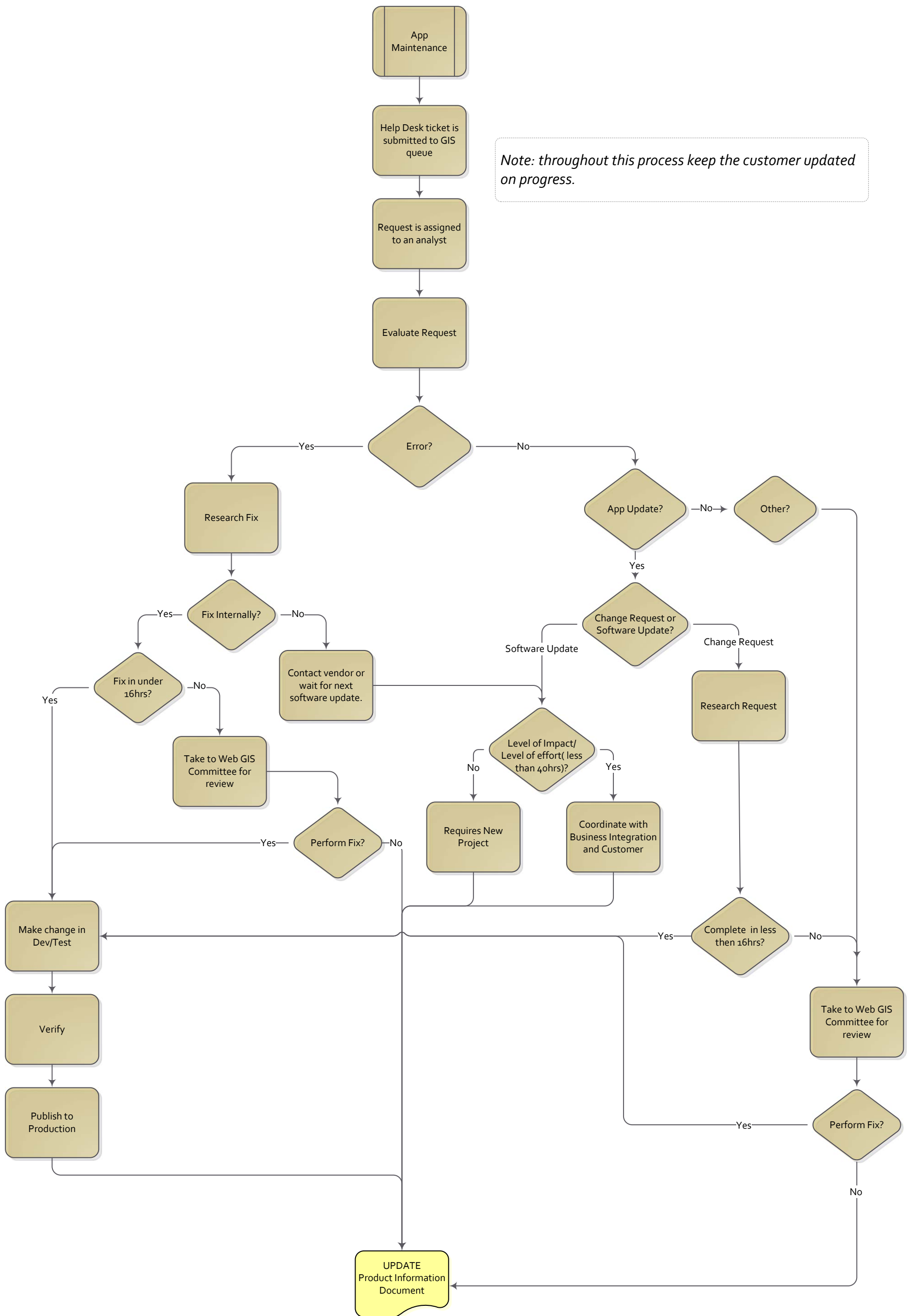
### Best Practices

1. Application Development
2. Portal Implementation
3. Enterprise Integration
4. Environment Isolation
5. High Availability
6. IT Governance
7. Load Balancing
8. Project Prioritization
9. Publication Strategy
10. Workforce Development
11. GIS Business Patterns
12. Identity
13. Security
14. Workload Separation
15. Smart Community Model
16. Web GIS Committee

# Matanuska-Susitna Borough Web GIS Decision Tree

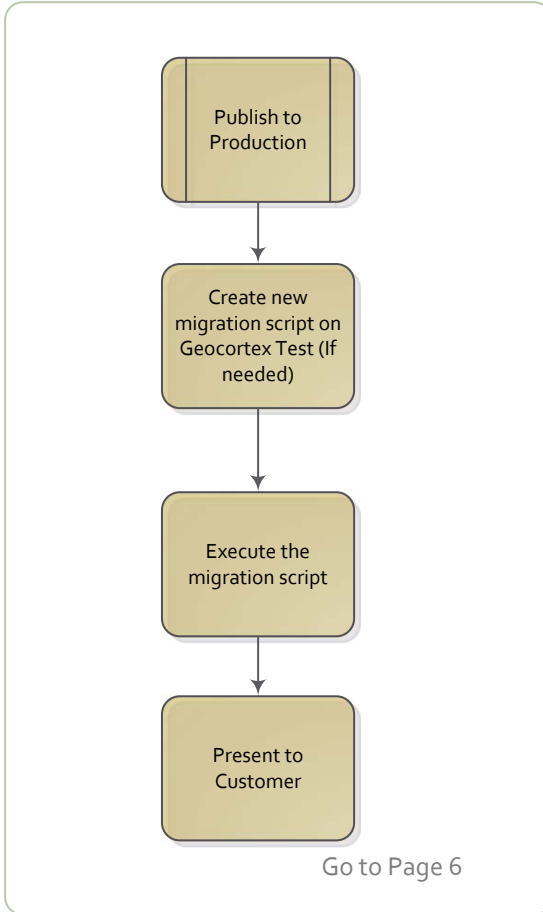
## App Maintenance Subprocess

Click here to open an Excel document that contains detailed explanations of each subprocess step titled 1-Web GIS Decision Tree Subprocesses.



Click here to open an Excel document that contains detailed explanations of each subprocess step titled 1-Web GIS Decision Tree Subprocesses.

## Publish to Production Geocortex



*Publishing updates to existing applications requires the publication to be done during outage hours. Discuss the publication with IT to determine the best timeframe to move forward.*

To be defined as the project progresses....

**Publish to Production  
ArcGIS Online**

**Publish to Production  
ArcGIS Portal**

**Publish to Production Web  
Server**

## Best Practices

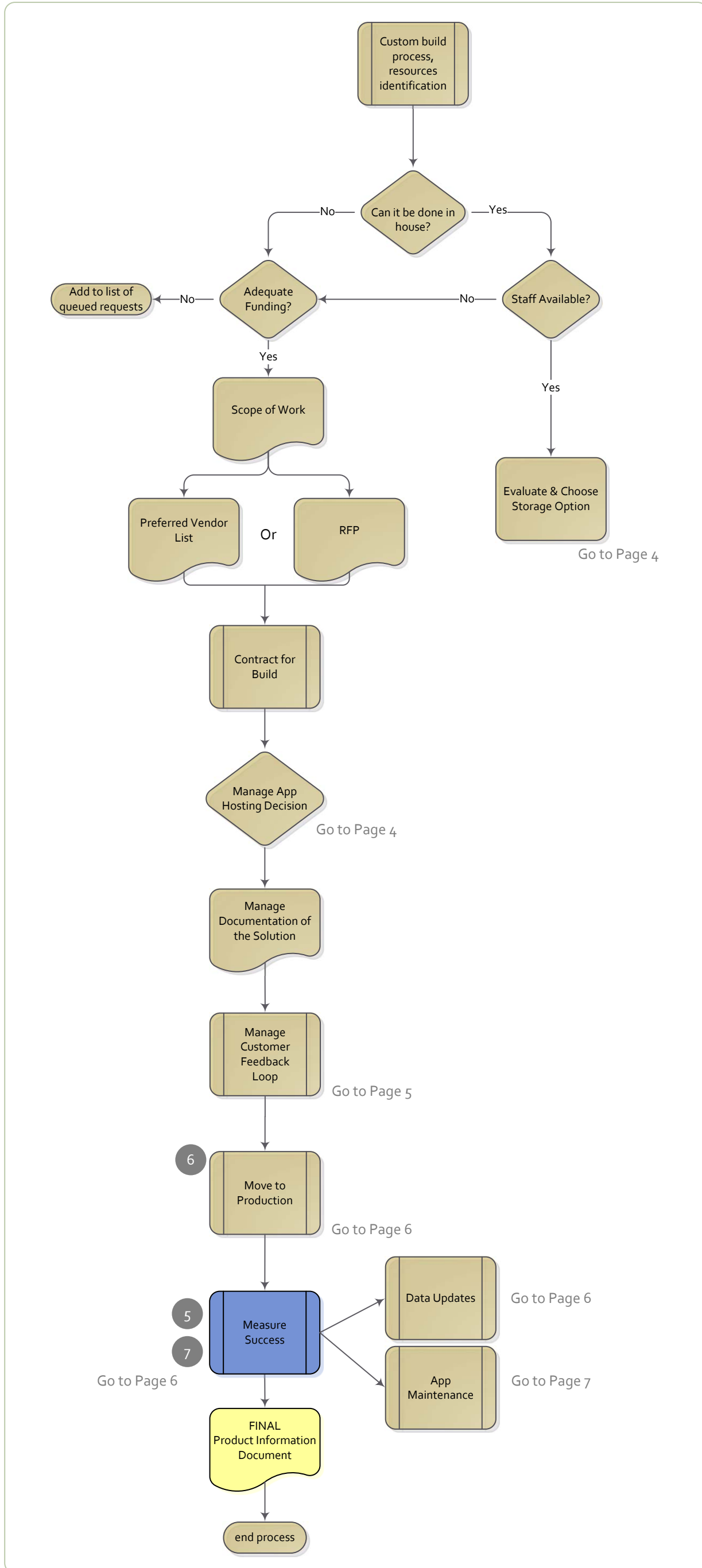
1. Application Development
2. Portal Implementation
3. Enterprise Integration
4. Environment Isolation
5. High Availability
6. IT Governance
7. Load Balancing
8. Project Prioritization
9. Publication Strategy
10. Workforce Development
11. GIS Business Patterns
12. Identity
13. Security
14. Workload Separation
15. Smart Community Model
16. Web GIS Committee



# Matanuska-Susitna Borough Web GIS Decision Tree

## Custom Build Subprocess

Click here to open an Excel document that contains detailed explanations of each subprocess step titled 1-Web GIS Decision Tree Subprocesses.



- Best Practices**
1. Application Development
  2. Portal Implementation
  3. Enterprise Integration
  4. Environment Isolation
  5. High Availability
  6. IT Governance
  7. Load Balancing
  8. Project Prioritization
  9. Publication Strategy
  10. Workforce Development
  11. GIS Business Patterns
  12. Identity
  13. Security
  14. Workload Separation
  15. Smart Community Model
  16. Web GIS Committee