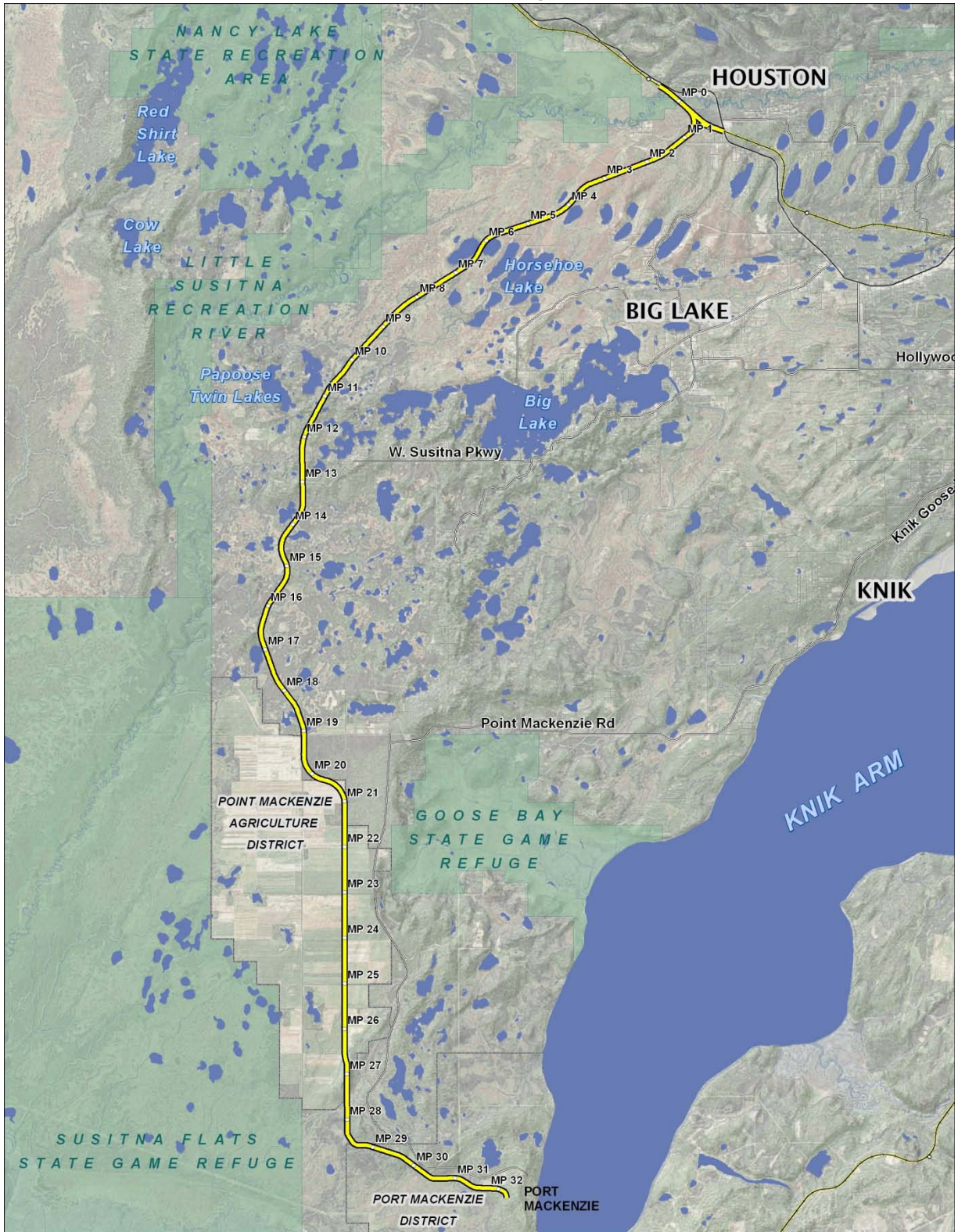


# Mac Central and Houston South Project Area



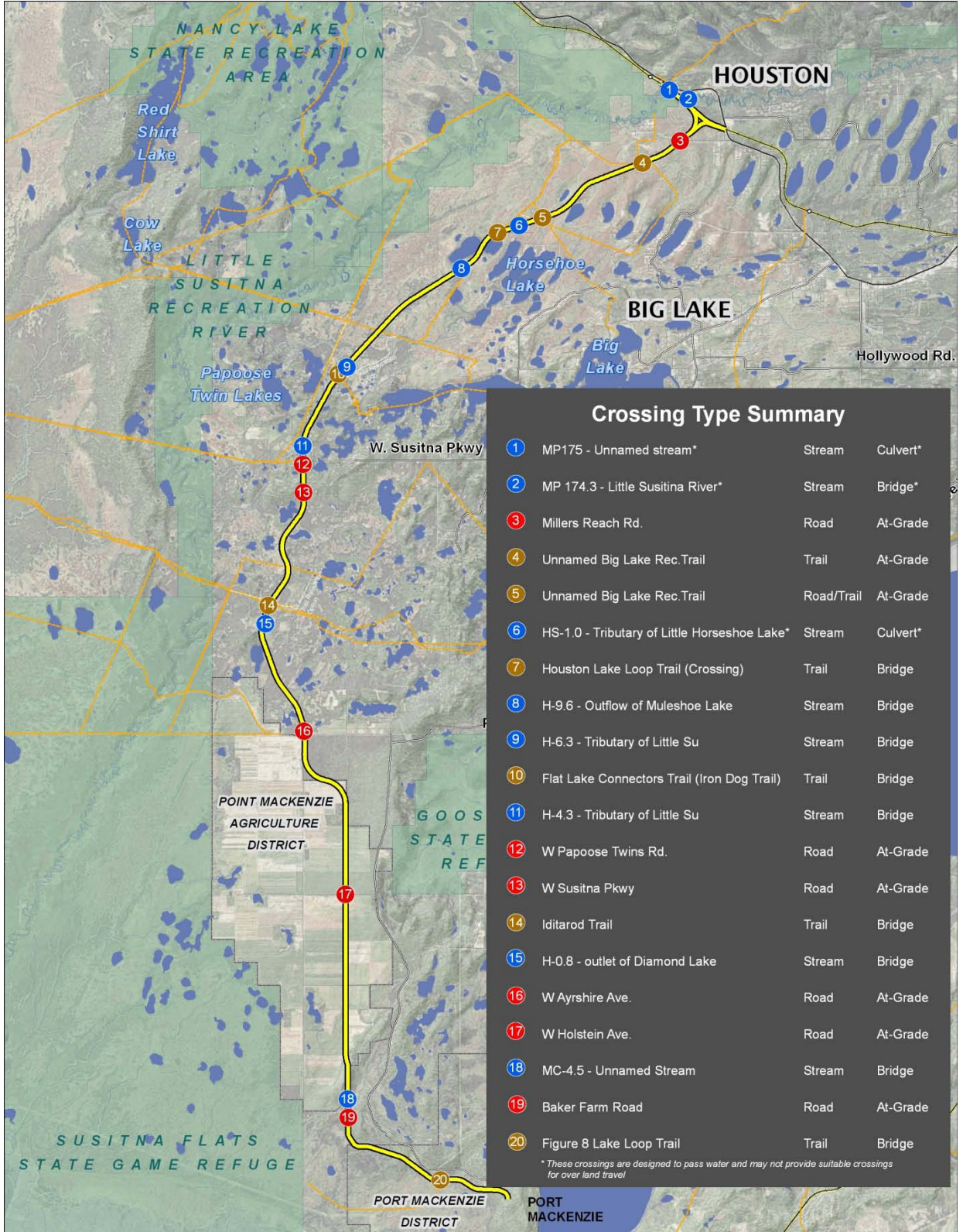
# Mac Central, Houston South Alignment

## Key Construction Elements

---

- 32.5 miles of new rail
- 200 foot right-of-way
- Railroad only
- 16 crossings, including:
  - 7 at grade crossings of roads and trails
  - 4 additional grade separations of trails
  - 5 stream crossings that provide additional spans for public crossing/access
- Terminal reserve area to facilitate the arrival and departure of trains
- Drainage structures to maintain drainage throughout the project area
- Rail bridge proposed for Little Susitna River (120-foot span over the river on concrete abutments)
- 6.57 miles of rail line will cross the Agricultural Project area
- Removal or relocation of one home
- Final design and construction estimated to cost \$200 million (2007 dollars—PEAR)
- Constructed by end of 2014

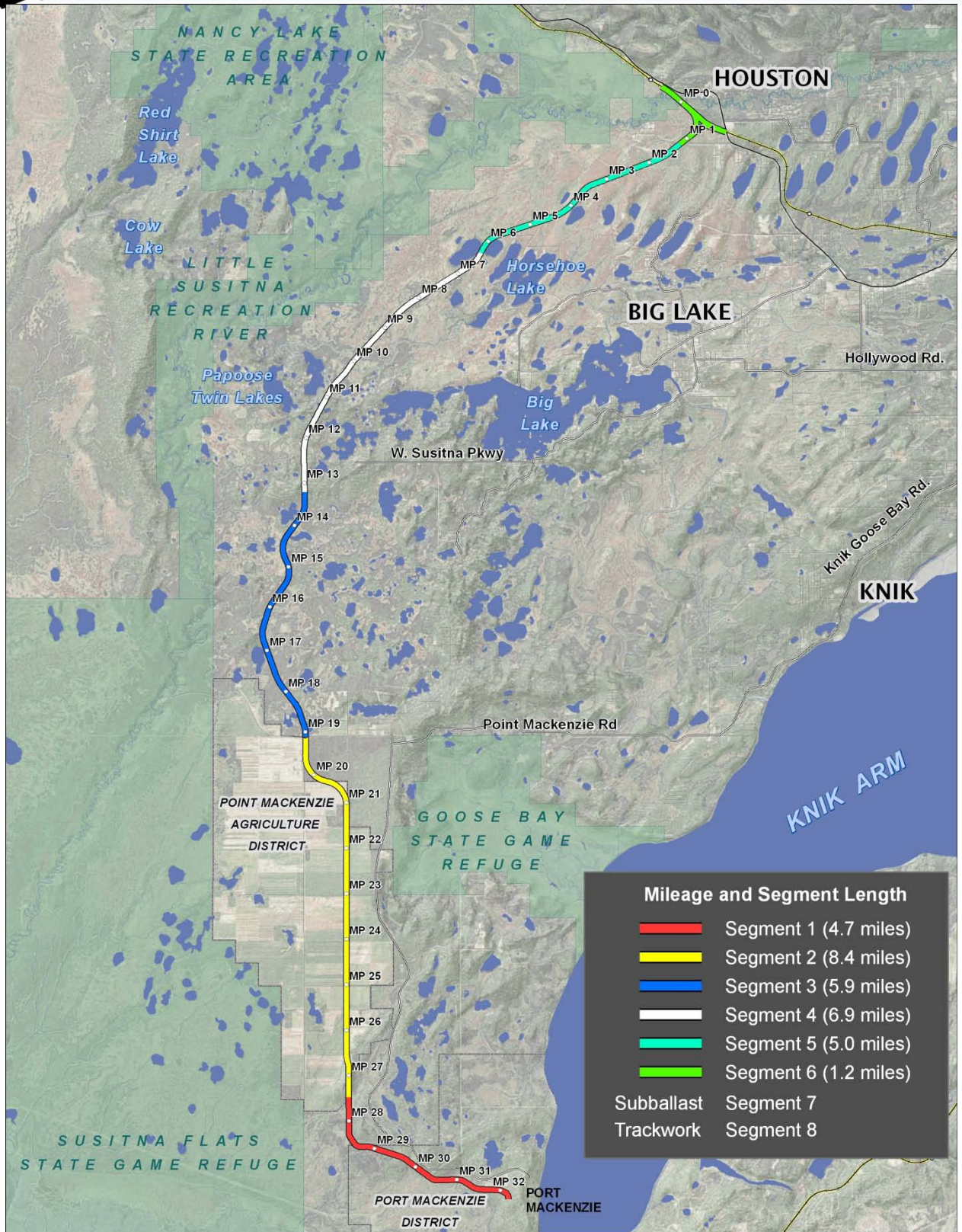
# Crossings



## Crossing Type Summary

1	MP175 - Unnamed stream*	Stream	Culvert*
2	MP 174.3 - Little Susitna River*	Stream	Bridge*
3	Millers Reach Rd.	Road	At-Grade
4	Unnamed Big Lake Rec. Trail	Trail	At-Grade
5	Unnamed Big Lake Rec. Trail	Road/Trail	At-Grade
6	HS-1.0 - Tributary of Little Horseshoe Lake*	Stream	Culvert*
7	Houston Lake Loop Trail (Crossing)	Trail	Bridge
8	H-9.6 - Outflow of Muleshoe Lake	Stream	Bridge
9	H-6.3 - Tributary of Little Su	Stream	Bridge
10	Flat Lake Connectors Trail (Iron Dog Trail)	Trail	Bridge
11	H-4.3 - Tributary of Little Su	Stream	Bridge
12	W Papoose Twins Rd.	Road	At-Grade
13	W Susitna Pkwy	Road	At-Grade
14	Iditarod Trail	Trail	Bridge
15	H-0.8 - outlet of Diamond Lake	Stream	Bridge
16	W Ayrshire Ave.	Road	At-Grade
17	W Holstein Ave.	Road	At-Grade
18	MC-4.5 - Unnamed Stream	Stream	Bridge
19	Baker Farm Road	Road	At-Grade
20	Figure 8 Lake Loop Trail	Trail	Bridge

\* These crossings are designed to pass water and may not provide suitable crossings for over land travel



Mileage and Segment Length	
<span style="color: red;">█</span>	Segment 1 (4.7 miles)
<span style="color: yellow;">█</span>	Segment 2 (8.4 miles)
<span style="color: blue;">█</span>	Segment 3 (5.9 miles)
<span style="color: white;">█</span>	Segment 4 (6.9 miles)
<span style="color: cyan;">█</span>	Segment 5 (5.0 miles)
<span style="color: green;">█</span>	Segment 6 (1.2 miles)
<span style="color: yellow;">█</span>	Subballast Segment 7
<span style="color: yellow;">█</span>	Trackwork Segment 8