

# MATANUSKA-SUSITNA BOROUGH

## SPECIAL ELECTION BROCHURE

JULY 12, 2022



Borough Clerk's Office • 350 E. Dahlia Avenue • Palmer, AK 99645  
Lonnie R. McKechnie, CMC, Borough Clerk

[www.matsugov.us/elections](http://www.matsugov.us/elections)

## Table of Contents

---

Letter to Voters .....	3
Voting Information.....	4-5
Frequently Asked Questions .....	6
General Precinct Information .....	7
Precinct Locations .....	8
Ballot Proposition No.1-Reapportionment.....	9-11
Ballot Proposition No.2-Term Limits-Mayor.....	12
Ballot Proposition No.3-Term Limits-Assembly.....	13
Ballot Proposition No.4-Senior/Disabled Veteran Tax Exemption	14
Areawide vs. Non-Areawide .....	15
Sample Ballot .....	16-17
Voter Registration .....	18
COVID-19 Information .....	19
2022 Other Important Election Voting Dates.....	20
Early/Absentee Voting.....	21
Absentee By-Mail .....	22-23

# **Special Election Day is Tuesday, July 12, 2022**

***VOTE! Let your VOICE be heard!***

This publication is distributed by the Matanuska-Susitna Borough Clerk's Office pursuant to MSB 25.05.120. One copy is mailed to each registered voter household within the Borough to inform voters of candidates, propositions, and general voting information.

## Letter to Voters

---



**MATANUSKA-SUSITNA BOROUGH  
BOROUGH CLERK'S OFFICE**

350 East Dahlia Avenue, Palmer, AK 99645

Phone (907) 861-8683 Fax (907) 861-7845

[www.matsugov.us](http://www.matsugov.us)

June 11, 2022

Dear Voter:

The Borough Clerk's Office is pleased to provide you with the Election Brochure for the July 12, 2022, Special Borough Election. Inside you will find information on four areawide propositions, polling places, voting options, frequently asked questions, and other information concerning the election.

If you are unable to vote at your precinct on Election Day, you may vote early or absentee. An absentee by-mail ballot application and information on early and absentee in-person voting are included in this brochure.

I hope that you find this publication useful as you prepare to vote in the upcoming election. If you have any questions, please visit us online at **[www.matsugov.us/elections](http://www.matsugov.us/elections)** or call 907-861-8683.

Sincerely,

A handwritten signature in black ink, reading "Lonnie R. McKechnie".

Lonnie R. McKechnie, CMC  
Borough Clerk

## Voting Information

---

### POLLING PLACES

The polls are open from 7 a.m. to 8 p.m. on Election Day. To locate your polling place, please refer to the information on page 7.


### BRING IDENTIFICATION TO THE POLLS

You must be prepared to show one form of acceptable identification, which includes:

- Voter ID Card
- State ID Card
- Passport
- Birth Certificate
- Driver's License
- Valid Photo ID Card
- Military ID Card
- Hunting or Fishing License

***If you do NOT have identification when voting, you will be asked to vote a questioned ballot.***

### MARKING THE BALLOT

When voting the ballot, completely fill in the oval next to the candidate or issue you wish to vote for with a black or blue ink pen. Do NOT use red ink. Completely fill in the oval like this: 

You only have to mark the races or issues you choose to vote for. If you mark more than one choice in a race or issue, that section of the ballot will NOT be counted. The sections of the ballot that are properly marked will be counted.

If you make a mistake marking your ballot, do NOT erase or correct the ballot. Return the spoiled ballot to an election worker and request a new ballot. You may only receive a replacement for a spoiled ballot two times for a total of three ballots issued.

### CAMPAIGNING PROHIBITED IN OR NEAR THE POLLS (ELECTIONEERING)

Electioneering is an act that is meant to persuade voters to vote in a particular way. During the hours the polls are open, no person who is in the polling place or within 200 feet of any entrance of the polling place may attempt to persuade a person to vote for or against a candidate, proposition, or question. Examples of electioneering include: discussion of candidates or issues, displaying campaign signs, bumper stickers, buttons, hats, and other like items.

### NONPARTISAN REQUIREMENTS

All Borough elections are nonpartisan pursuant to Borough code. Candidate party affiliation is not listed on the ballot nor in this brochure.

## Voting Information

---

### QUESTIONED BALLOT VOTING

You will be asked to vote a questioned ballot:

- If your name is NOT listed on the precinct register
- If you do not have identification
- If you choose to vote outside of your precinct on Election Day
- If your qualifications to vote have been questioned

Before receiving a ballot, you must complete a questioned ballot envelope. Your voted ballot will be placed in a secrecy sleeve and sealed inside your completed ballot envelope. The information you provide on the outside of the ballot envelope will be used to determine your voting eligibility and to update your voter registration record with the Alaska State Division of Elections. If for any reason your questioned ballot is not counted, you will be notified in writing.

### ASSISTANCE TO VOTERS

Non-English speaking voters, voters who are blind, physically impaired, or otherwise incapable of marking a ballot, may bring a person, or if necessary two persons, of their choice with them to the poll to assist them in casting their ballot. The persons assisting the voter may not be a candidate for office in that election, a family member of a candidate for office in that election, the voter's employer, agent of the employer, or an officer or agent of the voter's union. The person providing assistance must take an oath before an election official not to divulge how the voter cast their ballot. Voters may also request an election official to assist them.

Polling locations within the Borough do not have language assistance for voters who have limited English proficiency. If you or someone you know needs language assistance, please contact the Borough Clerk's Office at 907-861-8683.

Magnifying ballot viewers for the visually impaired are available at all voting locations.

If you have difficulty gaining access to your polling place, or if you have accessibility questions about your polling place, please contact the Borough Clerk's Office at 907-861-8683.

#### Voting Assistance

A Touch Screen Voting unit will be available at the Mat-Su Borough DSJ Administration Building and the Mat-Su Division of Elections June 27, 2022, through July 11, 2022. Touch screen voting is intended for the blind, the disabled, and voters with reading difficulties. The touch screen unit allows disabled voters to vote unassisted with a magnified, high contrast, and audio ballot.

### VOTING BY PERSONAL REPRESENTATIVE

A voter with a disability, who because of that disability is unable to go to a polling location, may appoint a personal representative to obtain all voting information and a ballot from an election official. Special Needs voting is available during the voting period from any early/absentee voting location or at any polling location on Election Day.

You may vote from the convenience of your home by applying for an absentee by-mail ballot. See pages 22 and 23 for more information.

## Frequently Asked Questions

---

### **Who may vote in this election?**

Qualified voters of the Matanuska-Susitna Borough.

### **How old must I be to register to vote?**

You must be 18 years of age to vote. You may register any time within 90 days immediately preceding your 18th birthday.

### **When are elections held?**

The Matanuska-Susitna Borough will hold a special election on July 12, 2022. Regular Elections are held annually the first Tuesday, following the first Monday in November. This year the Regular Election will be November 8.

### **How do I register to vote or update my voter registration record?**

To register to vote or update your voter registration record, you must complete a voter registration application. You may complete an application online at **[www.elections.alaska.gov](http://www.elections.alaska.gov)** or you may print an application and return it to a voter registrar.

Voter registration applications are also available at any Alaska State Division of Elections Office; Alaska State Division of Motor Vehicles; through a voter registration agency to include the Borough Clerk's Office, the City Clerk's Office in Houston, Palmer, and Wasilla; or your local library.

### **Do I have to register for each election?**

No. If you are registered to vote in State elections, you are also registered to vote in local elections, as long as you were registered to vote in the Borough 30 days prior to the election. Your registration remains active as long as you remain a resident of Alaska in good standing.

### **What happens if I am in line to vote when the polls close at 8 p.m.?**

You will be allowed to vote if you are in line to vote when the polls close.

### **Where do I vote?**

If you do not know where to vote, please see page 7, or call the Alaska State Division of Elections at 907-373-8952 or the Borough Clerk's Office at 907-861-8683.

### **Is there an absentee voting site open on Election Day?**

No, there will not be an absentee voting site open on Election day for the Mat-Su Borough.

**If I apply for an absentee by-mail ballot, do I continue voting by-mail forever?** No, an absentee by-mail application must be completed every year in order to receive a by-mail ballot from the Mat-Su Borough.

### **Do I have to wear a mask/facial covering when voting in person?**

The Mat-Su Borough does not require mask/facial coverings. Some voting locations may require mask/facial coverings.



## General Precinct Information

---

### What to expect at polling places this year:

- The Mat-Su Borough's Special Election will be held on Tuesday, July 12, 2022.
- All 41 precincts located in the Mat-Su Borough will be open.

### Polling location information:

Precinct locations and precinct maps are available online at:

**[www.matsugov.us/elections](http://www.matsugov.us/elections)—under the Voting Locations section**

If you are not sure where your assigned polling location is, you have the following options:

- Call the Alaska State Division of Elections precinct locator at 1-888-383-8683 (toll free)
- Call the Alaska State Division of Elections, Mat-Su Office at 907-373-8952
- Call the Borough Clerk's Office at 907-861-8683



## Precinct Locations for the July 12, 2022, Special Election

<b>07-100 Lakes No. 1</b> Finger Lake Elementary School 5881 E Eek Street	<b>09-628 Fishhook</b> Government Peak Chalet 10690 N Mountain Trails Drive	<b>11-055 Walby</b> Colony Middle School 9250 E Bogard Road
<b>07-105 Pioneer Peak</b> Pioneer Peak Elementary School 1959 N Stringfield Road	<b>09-640 Sheep Mountain</b> Glacier View School 65975 S Wolverine Circle (Mile 104 Glenn Highway)	<b>11-060 Greater Palmer</b> Palmer Community Center (Railroad Depot) 610 S Valley Way
<b>07-110 Schrock</b> Alcantra National Guard Armory 3401 E Bogard Road	<b>09-645 Sutton</b> Sutton Public Library 11301 N Chickaloon Way	<b>11-065 Mat-Su Campus</b> Matanuska-Susitna College 8295 E College Drive
<b>07-115 Wasilla Lake</b> Cottonwood Creek Elementary School 800 N Seward Meridian Parkway	<b>10-005 Kings Lake</b> Colony High School 9550 E Bogard Road	<b>11-070 Palmer City No. 1</b> Mat-Su Borough Building (Chambers) 350 E Dahlia Avenue
<b>07-120 Wasilla No. 1</b> Wasilla Middle School 650 Bogard Road	<b>10-010 Church</b> Lamb of God Lutheran Church 1221 N Church Road	<b>11-075 Palmer City No. 2</b> Mat-Su Borough Building (Gym) 350 E Dahlia Avenue
<b>07-125 Wasilla No. 2</b> Wasilla City Hall 290 E Heming Avenue	<b>10-015 Tanaina</b> Tanaina Elementary School 2550 N Lucille Street	<b>11-085 Trunk</b> Central Mat-Su Public Safety Building (Station 5-1) 1911 S Terrace Court
<b>07-130 Foothills</b> Menard Sports Center 1001 S Clapp Street	<b>10-020 Houston</b> Houston City Hall 13878 W Armstrong Road	<b>11-090 Seward Meridian</b> White Fields Church 4800 E Palmer-Wasilla Highway
<b>08-130 Meadow Lakes No. 1</b> Meadow Lakes Elementary School 1741 N Pittman Road	<b>10-025 Meadow Lakes No. 3</b> Church on the Rock 3571 W Machen Road	<b>11-095 Springer Loop</b> Palmer 7th Day Adventist Church 2238 S Inner Springer Loop
<b>08-135 Meadow Lakes No. 2</b> Public Safety Building (Station 7-3) 10073 W Parks Highway	<b>10-030 Susitna</b> Susitna Valley High School 42728 S Parks Highway	<b>11-099 Lazy Mountain</b> Lazy Mountain Bible Church 18005 E Shawn Drive
<b>08-140 Knik Goose Bay No. 1</b> Knik Elementary School 6350 W Hollywood Road	<b>10-035 Talkeetna</b> Talkeetna Public Library 24645 Talkeetna Spur Road	<b>12-200 Fairview No. 1</b> Fairview Loop Baptist Church 3118 W Fairview Loop
<b>08-145 Knik Goose Bay No. 2</b> Goose Bay Elementary School 6400 W Hollywood Road	<b>10-040 Trapper Creek</b> Trapper Creek Elementary School 6742 E Petersville Road	<b>12-205 Fairview No. 2</b> Machetanz Elementary School 4981 E Nelson Road
<b>08-150 Knik Goose Bay No. 3</b> Public Safety Building (Station 6-2) 4568 S Knik Goose Bay Road	<b>10-045 Willow</b> Willow Elementary School 31706 W Parks Highway	<b>12-210 Snowshoe</b> Fairview Loop Baptist Church 3118 W Fairview Loop
<b>08-155 Big Lake</b> Big Lake Lions Club 2842 S Lions Circle	<b>10-050 Meadow Lakes No. 4</b> American Legion Post 35 4180 W Tweed Court	<b>12-220 Butte</b> Butte Elementary School 4006 S Butte Road
<b>09-622 Farm Loop</b> Farm Loop Christian Center 5900 N Farm Loop Road	<b>10-055 Lakes No. 2</b> Larson Elementary School 2722 E Seldon Road	

## Ballot Proposition

---

### PROPOSITION NO. 1

#### **Reapportionment Plan**

After each federal census and adoption of a redistricting plan for the State legislature, the Matanuska-Susitna Borough Assembly is required to propose to the voters of the Borough a form of representation for the Assembly and the plan of apportionment for Assembly Districts.

The Assembly proposes that the Assembly be composed of seven members, each of whom shall be elected from an election district by the voters of the district. The boundaries of each election district are shown on a map available and posted at each polling place in the Matanuska-Susitna Borough.

Shall the composition and form of representation of the Matanuska-Susitna Borough Assembly, and the plan of apportionment for Assembly Districts, be approved as stated above?

YES ☐ NO ☐

For a copy of **Ordinance Serial No. 22-047** placing Proposition No. 1 on the ballot, please visit the Borough's website at

[www.matsugov.us/elections](http://www.matsugov.us/elections)

Or call the Borough Clerk's Office at 907-861-8683.

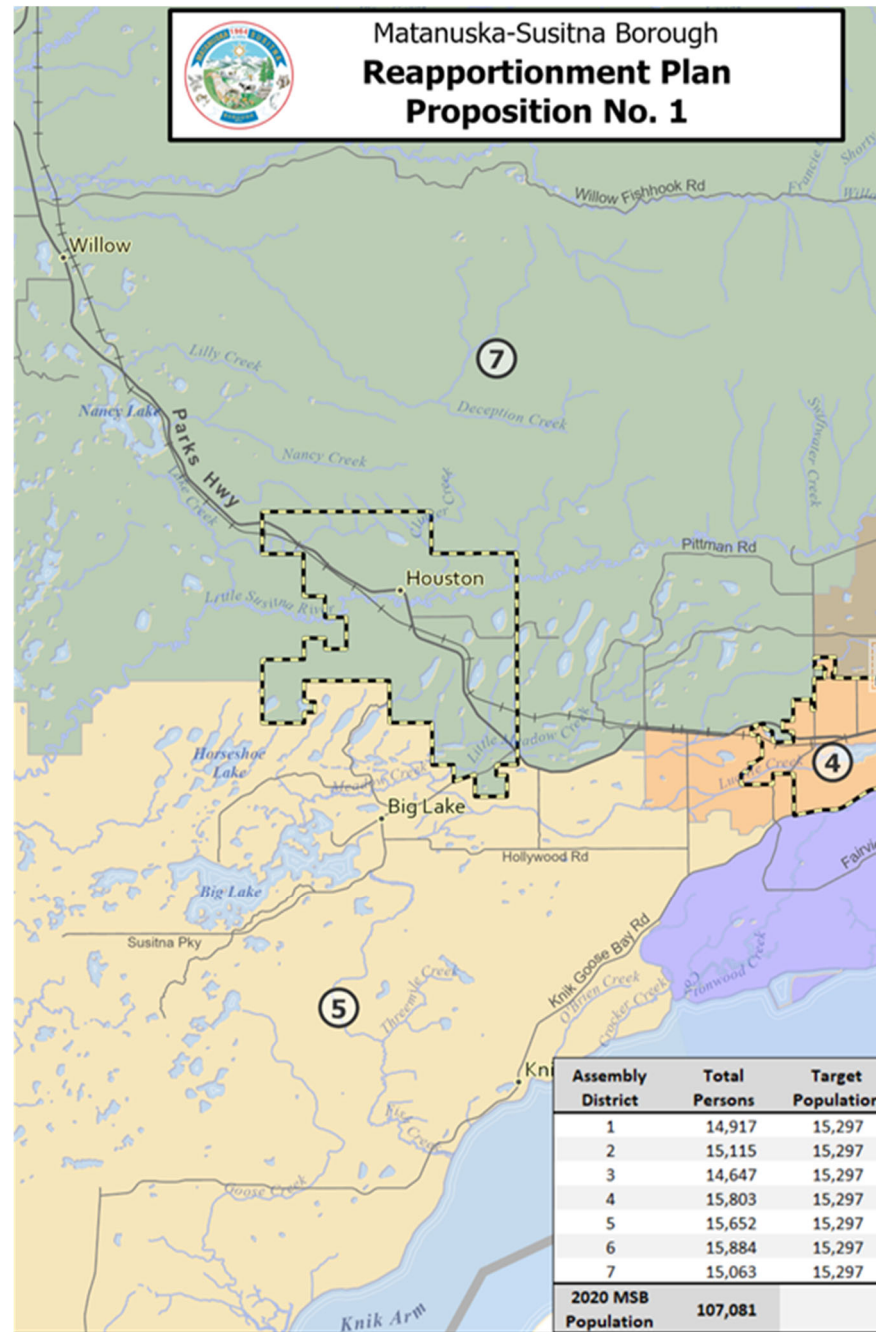
A copy of the ordinance will be available at all voting locations.

To view a map of the reapportionment plan, please turn to pages 10-11. The reapportionment map is also available at:

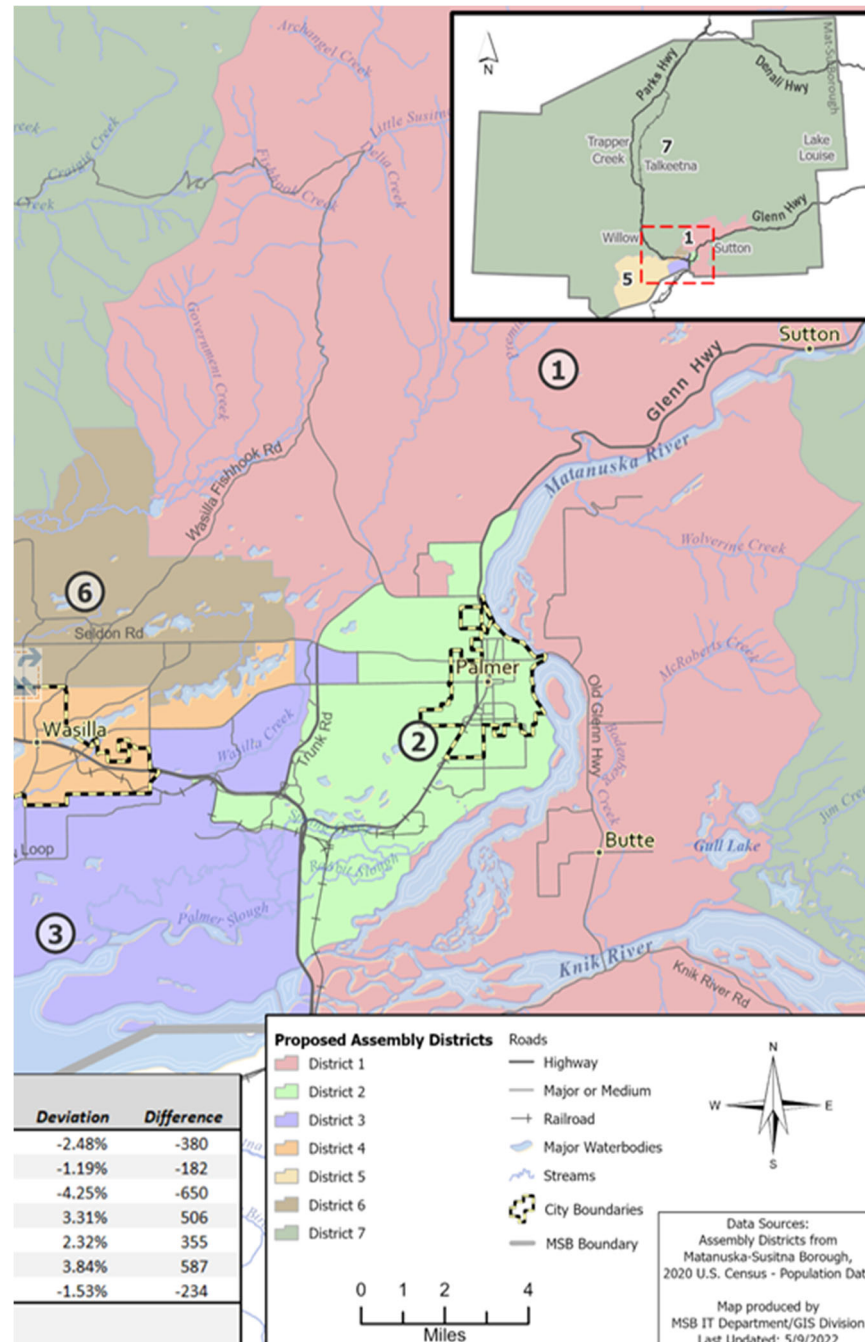
[www.matsugov.us/reapportionment](http://www.matsugov.us/reapportionment)

**A map of the reapportionment plan will also be posted in all Borough Early/Absentee voting sites and polling locations on election day.**

## Reapportionment Map



# Reapportionment Map



## Ballot Proposition

---

### Proposition No. 2

#### **Lifetime Term Limits for Borough Mayor**

Borough code currently limits a person serving as mayor to no more than two consecutive full terms, but does not restrict the total number of terms a person can serve in their lifetime. Ordinance Serial No. 22-026 adopts lifetime term limits for the office of Borough Mayor and limits a person to serving 2 terms for life. Service for more than one-half of a term is considered a full term. The ordinance applies to all current and former Mayors except that the current Mayor would be allowed to seek one additional term.

Shall Ordinance Serial No. 22-026 be ratified and adopted?

YES ☐ NO ☐

For a copy of **Ordinance Serial No. 22-026** placing  
Proposition No. 2 on the ballot, please visit the Borough's website at

[www.matsugov.us/elections](http://www.matsugov.us/elections)

Or call the Borough Clerk's Office at 907-861-8683.

A copy of the ordinance will be available at all voting locations.

## Ballot Proposition

---

### Proposition No. 3

#### **Lifetime Term Limits for Borough Assembly**

Borough code currently limits a person serving as an Assemblymember to no more than two consecutive full terms, but does not restrict the total number of terms a person can serve in their lifetime. Ordinance Serial No. 22-025 adopts lifetime term limits for the office of Borough Assembly and limits a person to serving 2 terms for life. Service for more than one-half of a term is considered a full term. The ordinance applies to all current and former Assemblymembers except that all current Assemblymembers would be allowed to seek one additional term.

Shall Ordinance Serial No. 22-025 be ratified and adopted?

YES ☐ NO ☐

For a copy of **Ordinance Serial No. 22-025** placing  
Proposition No. 3 on the ballot, please visit the Borough's website at

[www.matsugov.us/elections](http://www.matsugov.us/elections)

Or call the Borough Clerk's Office at 907-861-8683.

A copy of the ordinance will be available at all voting locations.

## Ballot Proposition

---

### Proposition No. 4

#### **Increasing the Mat-Su Borough's Senior/Disabled Veteran Residential Owner Occupied Property Optional Tax Exemption From \$68,000 to \$114,000 of Assessed Value For A Total Exemption Of \$264,000**

The Matanuska-Susitna Borough currently provides an optional real property tax exemption of \$68,000 of assessed value that is in addition to the State required exemption of \$150,000 of assessed value of real property owned and occupied as a permanent place of abode of a resident who is (1) Sixty-five years of age or older, (2) a disabled veteran, including a person who was disabled in the line of duty while serving in the Alaska Territorial Guard, or (3) at least 60 years old and a widow or widower of a person who qualified for an exemption. This exemption applies in addition to any other exemption applicable to the property. Currently, the total of the exemptions is \$218,000.

The Matanuska-Susitna Borough proposes to increase the optional exemption from \$68,000 to \$114,000 for a total exemption of \$264,000 and provide that the optional portion of the exemption will be adjusted annually based upon the percentage change in the federal Housing Price Index.

The estimated cost of this change in the first year exceeds \$2.9 million.

Should this ordinance become law?

YES ☐ NO ☐

For a copy of **Ordinance Serial No. 22-029** placing  
Proposition No. 4 on the ballot, please visit the Borough's website at

[www.matsugov.us/elections](http://www.matsugov.us/elections)

Or call the Borough Clerk's Office at 907-861-8683.

A copy of the ordinance will be available at all voting locations.

## Areawide vs. Non-Areawide

---

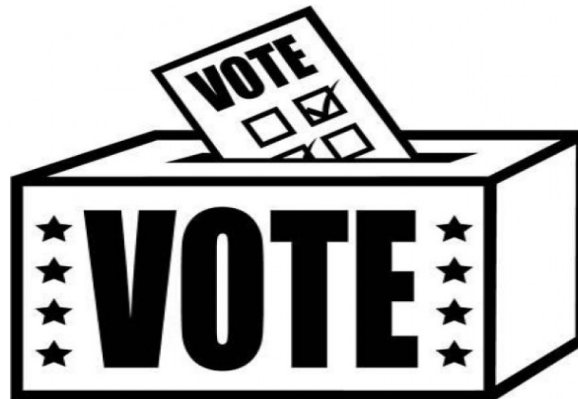
All registered voters of the Borough are entitled to vote, but not all voters are entitled to vote on the same races or issues. The address a voter identifies as their residence address when registering to vote, determines what ballot type the voter receives.

Borough ballot issues are divided into two groups: **areawide** and **non-areawide**.

**Areawide** means all voters are entitled to vote on a candidate or issue, such as Borough Mayor and areawide ballot propositions.

**Non-areawide** means a voter must reside in a particular voting area to vote on a candidate or issue such as Borough Assembly or School Board races, annexations, creation of service areas, or other propositions for voters residing in certain areas of the Borough outside the cities of Houston, Palmer, or Wasilla.

For more information, call the Borough Clerk's Office at 907-861-8683.



SAMPLE BALLOT



MATANUSKA-SUSITNA BOROUGH

SAMPLE BALLOT

SPECIAL ELECTION - JULY 12, 2022

**Instructions To Voters:**

To vote, completely fill in the oval to the left of your choice, like this: ☒

Use a blue or black ink pen to mark your ballot. NO RED INK. If you make a mistake, ask for a new ballot.

PROPOSITION NO. 1	PROPOSITION NO. 2
<p><b>Reapportionment Plan</b></p> <p>After each federal census and adoption of a redistricting plan for the State legislature, the Matanuska-Susitna Borough Assembly is required to propose to the voters of the Borough a form of representation for the Assembly and the plan of apportionment for Assembly Districts.</p> <p>The Assembly proposes that the Assembly be composed of seven members, each of whom shall be elected from an election district by the voters of the district. The boundaries for each election district are shown on a map available and posted at each polling place in the Matanuska-Susitna Borough.</p> <p>Shall the composition and form of representation of the Matanuska-Susitna Borough Assembly, and the plan of apportionment for Assembly Districts, be approved as stated above?</p> <p><input type="radio"/> YES <input type="radio"/> NO</p>	<p><b>Lifetime Term Limits For Borough Mayor</b></p> <p>Borough code currently limits a person serving as mayor to no more than two consecutive full terms, but does not restrict the total number of terms a person can serve in their lifetime. Ordinance Serial No. 22-026 adopts lifetime term limits for the office of Borough Mayor and limits a person to serving 2 terms for life. Service for more than one-half of a term is considered a full term. The ordinance applies to all current and former Mayors except that the current Mayor would be allowed to seek one additional term.</p> <p>Shall Ordinance Serial No. 22-026 be ratified and adopted?</p> <p><input type="radio"/> YES <input type="radio"/> NO</p>

VOTE BOTH SIDES OF BALLOT

SAMPLE BALLOT

PROPOSITION NO. 3	PROPOSITION NO. 4
<p><b>Lifetime Term Limits For Borough Assembly</b></p> <p>Borough code currently limits a person serving as an Assemblymember to no more than two consecutive full terms, but does not restrict the total number of terms a person can serve in their lifetime. Ordinance Serial No. 22-025 adopts lifetime term limits for the office of Borough Assembly and limits a person to serving 2 terms for life. Service for more than one-half of a term is considered a full term. The ordinance applies to all current and former Assemblymembers except that all current Assemblymembers would be allowed to seek one additional term.</p> <p>Shall Ordinance Serial No. 22-025 be ratified and adopted?</p> <p><input type="radio"/> YES</p> <p><input type="radio"/> NO</p>	<p><b>Increasing The Mat-Su Borough's Senior/Disabled Veteran Residential Owner Occupied Property Optional Tax Exemption From \$68,000 To \$114,000 Of Assessed Value For A Total Exemption Of \$264,000</b></p> <p>The Matanuska-Susitna Borough currently provides an optional real property tax exemption of \$68,000 of assessed value that is in addition to the State required exemption of \$150,000 of assessed value of real property owned and occupied as a permanent residence of a resident who is (1) Sixty-five years of age or older, (2) a disabled veteran, including a person who was disabled in the line of duty while serving in the Alaska Territorial Guard, or (3) at least 60 years of age and a widow or widower of a person who qualified for an exemption. This exemption applies in addition to any other exemption applicable to the property. Currently, the total of the exemptions is \$218,000.</p> <p>The Matanuska-Susitna Borough proposes to increase the optional exemption from \$68,000 to \$114,000 for a total exemption of \$264,000 and provide that the optional portion of the exemption will be adjusted annually based upon the percentage change in the federal Housing Price Index.</p> <p>The estimated cost of this change in the first year exceeds \$2.9 million.</p> <p>Should this ordinance become law?</p> <p><input type="radio"/> YES</p> <p><input type="radio"/> NO</p>

SAMPLE BALLOT

VOTE BOTH SIDES OF BALLOT

## Voter Registration

---

Your voter registration record is important. Contact the Alaska State Division of Elections or the Borough Clerk's Office to update your voter registration record when making changes to your name, residence or mailing address, or other information contained in your registration record. You can also update your voter registration online at **<https://voterregistration.alaska.gov>**. You can see if you are registered to vote and check your registration information online with the Alaska State Division of Elections at: **[www.elections.alaska.gov](http://www.elections.alaska.gov)**



### What COVID-19 Precautions are being taken for In-Person voting?

Precautions and recommendations consist of, but are not limited to:

- Encouraging voters who have health concerns to vote Absentee By-Mail.
- Masks will be provided to voters and election officials if they choose to wear one.
- Asking Election Officials to not report to work if they feel ill or have undergone COVID-19 testing and have not received results.
- Election Officials will disinfect all areas throughout the day that are frequently touched such as: voting equipment, booths, tables, pens, secrecy sleeves



## 2022 Other Important Election Voting Dates

---

Date	Action
June 27- July 11	Early/Absentee Voting – Mat-Su Borough Special Election
July 12	Election Day – Mat-Su Borough Special Election
August 1-15	Early/Absentee Voting for the State of Alaska Primary Election
August 16	Election Day—State of Alaska Primary Election
September 19 -October 3	Early In-Person Voting for the cities of Houston, Palmer, and Wasilla
October 4	Election Day - cities of Houston, Palmer, and Wasilla
October 24- November 7	Early/Absentee Voting for the State of Alaska General Election and Mat-Su Borough Regular Election
November 8	Election Day – State of Alaska General Election and Borough Regular Election

---



## Early/Absentee In-Person Voting Information

---

### Early/Absentee In-Person Voting

Voters may choose to vote prior to Election Day at one of the following early/absentee in-person voting locations. Please note, the hours of operation vary at each location.

#### Mat-Su Division of Election

1700 East Bogard Road, Suite B102, Wasilla

This location is open as follows:

##### Monday through Friday:

- June 27 through July 11, 2022, 8 a.m.- 5 p.m.

##### Saturdays:

- July 2 and July 9, 2022, 10 a.m.- 4 p.m.

##### Sundays:

- July 3 and July 10, 2022, 12 p.m.- 4 p.m.

CLOSED the 4th of July

#### Mat-Su Borough Administration Building (Dorothy Swanda Jones Building)

350 E. Dahlia Avenue, Palmer (Assembly Chambers)

This location is open Monday - Friday, as follows:

- June 27 through July 11, 2022, 8 a.m.- 5 p.m.
- Saturday and Sunday - Closed

CLOSED the 4th of July

**Absentee In-Person Voting** will also take place June 27 through July 11, 2022, at **Talkeetna Public Library, Trapper Creek Library, and Houston City Hall** during normal business hours. All voting locations will be closed July 4, 2022.

#### Voting Assistance

A Touch Screen Voting unit will be available at the Mat-Su Borough DSJ Administrative Building and the Mat-Su Division of Elections June 27 through July 11, 2022, at the hours stated above. Touch screen voting is intended for the blind, the disabled, and voters with reading difficulties. The touch screen unit allows disabled voters to vote unassisted with a magnified, high contrast, and audio ballot.

## Absentee By-Mail

---

### Absentee By-Mail Voting

To vote from the convenience of your home, you may apply for a ballot to be mailed to you by filing an absentee by-mail ballot application beginning January 1 of the year in which the election is to be held.

The deadline for absentee by-mail ballot requests to be received by the Borough Clerk's Office for the Special Election is **Tuesday, July 5, 2022**. Absentee by-mail ballot applications may be mailed to the address on the application or submitted via fax to 907-861-7845. Each person requesting an absentee by-mail ballot must personally sign the application. No one can sign the application for you.

Complete your ballot request carefully and immediately return it to the Borough Clerk's Office to allow sufficient time for processing. **An incomplete application or mail delay could prevent you from receiving your ballot on time.** If after you submit your application, your residence or mailing address changes, please contact the Borough Clerk's Office.

To be counted, your ballot must be postmarked and mailed by Election Day, **July 12, 2022**, and received by **Friday, July 15, 2022**. If you want to hand deliver your ballot, please deliver to an election official no later than 8:00 p.m. Election Day.

An absentee by-mail ballot application is provided on page 23. It can also be downloaded from [www.matsugov.us/elections](http://www.matsugov.us/elections), or call the Borough Clerk's Office at 907-861-8683 to request an application.



## Absentee By-Mail Ballot Application

### MATANUSKA-SUSITNA BOROUGH- CLERK'S OFFICE

350 E Dahlia Avenue, Palmer, AK 99645  
907-861-8683 Phone • 907-861-7845 fax  
www.matsugov.us/elections

### REGULAR BOROUGH ELECTION: NOVEMBER 8, 2022

#### ABSENTEE BY MAIL VOTING

- Any registered Borough voter may apply for a ballot by-mail by submitting this application no later than 7 days prior to Election Day.
- Complete ALL sections of the application and sign. Blank fields, omissions, or errors may cause a delay in ballot mailing.
- You must sign the application. No one may sign on your behalf.
- Completed applications may be mailed, hand-delivered, or faxed to the Borough Clerk's Office (address & fax # above).
- The application deadline for the November 8, 2022, regular election is November 1, 2022.
- Once ballots are ready for distribution and upon timely receipt of a by-mail application, an official ballot and voting material will be mailed to the ballot mailing address provided on the application.
- Once you receive your ballot, carefully follow ALL instructions to ensure your ballot is properly cast.
- The returned (voted) by-mail ballot envelope **MUST** contain: Voter's signature, voter's identifier, and a witness or notary's signature.
- In order for your ballot to be counted, absentee by-mail ballots must be **postmarked by Election Day and received by the Clerk's Office no later than November 11, 2022.**
- Hand-delivered ballots **MUST** be returned to a Borough election official **by 8 p.m. on Election Day.**

**APPLY EARLY TO VOTE  
AN ABSENTEE BY-MAIL BALLOT!**

### 2022 ABSENTEE BY-MAIL BALLOT APPLICATION

Carefully complete ALL sections of this application and **SIGN**. Omissions or errors may cause a delay in ballot mailing. It is the responsibility of the applicant to contact the Borough Clerk's Office with any changes to the application after submission.

#### SECTION 1. APPLICANT INFORMATION

Send ballot for: ☐ Regular Election on November 8, 2022  
(Select one) ☐ All 2022 Borough Elections

##### Applicant's Full Name:

First & Last Name: \_\_\_\_\_  
MI: \_\_\_\_\_ Suffix (e.g. Jr, Sr, I, II): \_\_\_\_\_

##### Identifiers (you MUST provide at least ONE)

AK Voter No.: \_\_\_\_\_  
DOB: \_\_\_\_\_  
SSN or last 4: \_\_\_\_\_

##### Borough Residence Address (where you claim residency—MUST be provided)

Address: \_\_\_\_\_  
City/Zip: \_\_\_\_\_, Alaska  
Legal Description or Tax ID No.: (only if other than a street address)

##### Permanent Mailing Address (where you receive your mail on a daily basis)

Address: \_\_\_\_\_  
City/Zip: \_\_\_\_\_, Alaska

##### Contact Information: (used in case there is an issue with your application)

Contact Phone No.: \_\_\_\_\_  
Email: \_\_\_\_\_

#### SECTION 2. BALLOT MAILING ADDRESS (MUST be provided)

Address: \_\_\_\_\_  
City/State/Zip: \_\_\_\_\_  
Country (if outside USA): \_\_\_\_\_

#### SECTION 3. APPLICANT OATH

I certify, under penalty of perjury, that the information on this form is true and accurate, and complete to the best of my knowledge and I am eligible to vote in the Matanuska-Susitna Borough for at least 30 days prior to the election, I am not requesting a ballot from any other state, and I am not voting in any other manner in this (these) election(s). I further certify that I have not been convicted of a felony, or having been so convicted, have been unconditionally discharged from incarceration probation and/or parole. I am not registered to vote in another state or I have taken the necessary steps to cancel that registration.

Signature: \_\_\_\_\_ Date: \_\_\_\_\_

#### FOR OFFICE USE ONLY

VREMS check: _____ Initial and date	Voter No.: _____
Registered Precinct: _____	ASB/SB District: _____
Database Entry: _____ Initial and date	2nd Check: _____ Initial and date

Borough Clerk's Office  
Matanuska-Susitna Borough  
350 E. Dahlia Avenue  
Palmer, Alaska 99645

**VOTER INFORMATION ENCLOSED**

POLLING HOURS

7a.m. to 8 p.m.

