



MATANUSKA-SUSITNA BOROUGH Community Development Land & Resource Management

350 East Dahlia Avenue • Palmer, AK 99645
Phone (907) 861-7869 • Fax (907) 861-8635



PERSONAL USE CHRISTMAS TREE CUTTING AREA



Christmas tree cutting will be allowed on Borough land within the specified area shown on the map. The area is located at the Jim Creek Recreation Area south of East Sullivan Avenue. The boundaries will be marked with red and white flagging. Please remain within the flagged area. See map on reverse side for specific boundaries.

2022 Christmas Tree Area Requirements:

- ? **A permit is required prior to tree cutting.**
- ? Tree cutting will begin November 25th through December 25th 2022.
- ? No roads or parking areas will be maintained for Christmas tree cutting.
- ? Please note that not all trails are passable by highway vehicles; please be careful when attempting to navigate an unfamiliar trail.
- ? Christmas trees from this area are for personal use only and are not to be sold or bartered.
- ? Christmas trees from this area are limited to **one per household**.
- ? The participants shall remove any and all trash brought into the area by the participants.
- ? Trees must be no more than 15 feet in height.
- ? Topping of trees is prohibited.
- ? The participant agrees to indemnify, hold harmless, and defend the Borough, its officers and employees from and against any suit, action, claim, or liability arising out of any negligent act, error, or omission of the participant.
- ? Please check the following link for times and dates to dispose of your tree after Christmas:

<https://www.pickyourownchristmastree.org/AlaskaTreeRecyclingDisposal.php>

CHRISTMAS TREE AREA REQUIREMENTS WILL BE STRICTLY ENFORCED

For more information, please scan the QR Code
for a direct link to the Mat-Su Borough
E-Commerce website or call (907) 861-7869
<https://ecommerce.matsugov.us/Pages/default.aspx>

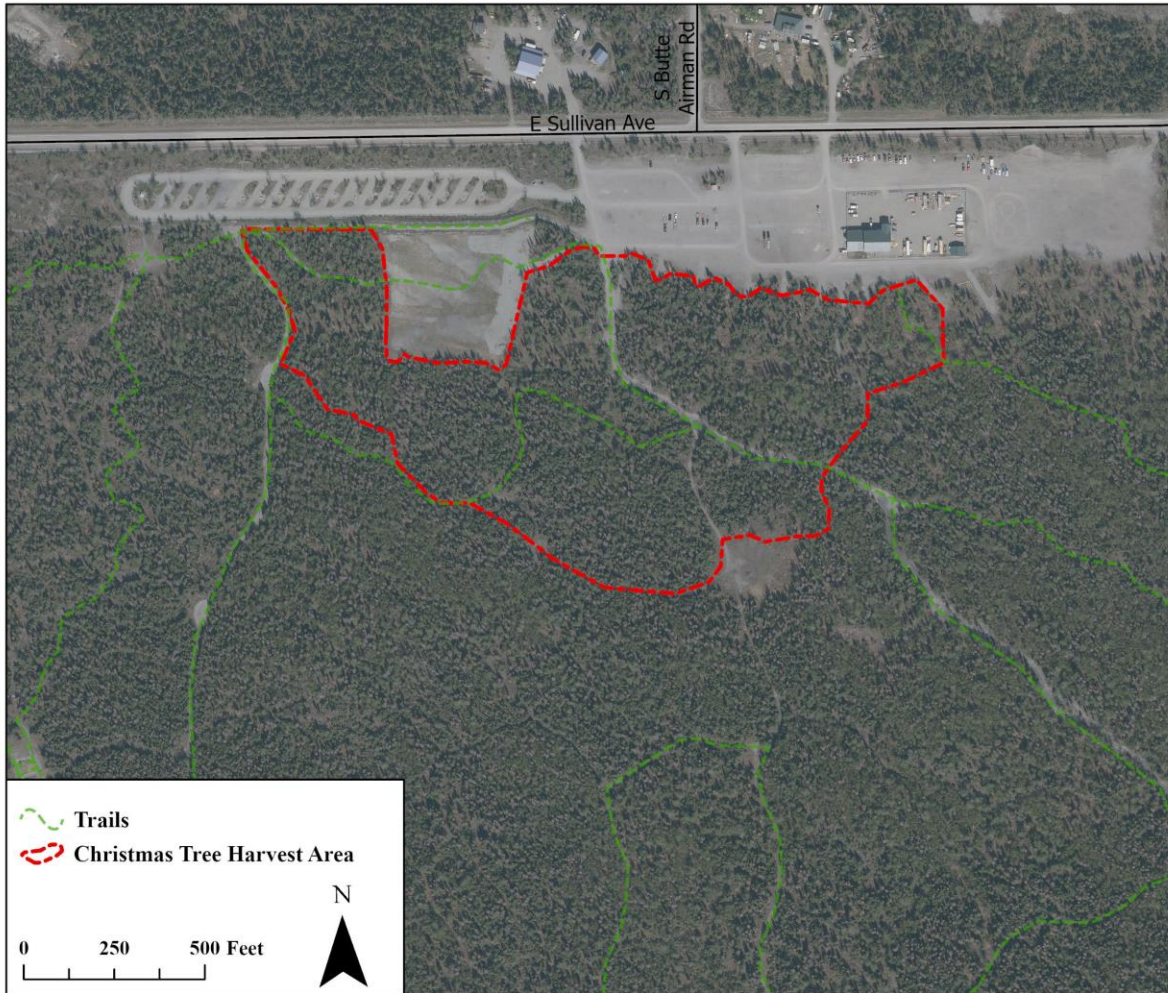


Trees acquired through the Personal Use Christmas Tree Program are for personal use
(or family/household use) and **NOT FOR RESALE**

BE SAFE OUT THERE AND HAPPY HOLIDAYS FROM THE MATANUSKA-SUSITNA BOROUGH!



2022 Jim Creek Christmas Tree Harvest Area



Matanuska-Susitna Borough
Land & Resource Management

