



MATANUSKA-SUSITNA BOROUGH
Community Development
Land & Resource Management Division
350 East Dahlia Avenue
Palmer, Alaska 99645

MATANUSKA-SUSITNA BOROUGH
PUBLIC NOTICE

Type: Public Use Easement (MSB007983)

Tax ID: 5256000T00A

Land & Resource Management Division has received a request from Cellco Partnership, dba Verizon Wireless to lease a 30' x 30' portion of Borough-owned property for the construction and operation of a commercial telecommunications facility. The request also includes a 15' access and utility easement to the proposed lease location as well as a 5' utility easement to provide power to the facility. The proposed lease area and access and utility easements are located on Borough-owned property utilized by West Lakes Fire Department Station 7-2. Emergency Services is aware of the request and is supportive of the wireless telecommunication facility. The 30' x 30' lease area will house a 125' monopole and associated telecommunication equipment necessary to operate the facility.

Supporting material is available for public inspection by appointment only during normal business hours on the 2nd floor of the Borough Building in the Land & Resource Management office or visit the Public Notice Section on the Borough's web page, www.matsugov.us. Public comment is invited on this request. If you have any comments please mail or deliver them to the Borough offices at the address indicated above, no later than **October 12, 2025**. If you have questions about this request or would like to schedule an appointment to view supporting materials, call Suzanne Reilly at 907-861-8492 between 8 am - 5 pm or you can send an e-mail to: **LMB@matsugov.us** (please refer to **MSB007983 Verizon Wireless Land Lease when submitting comments**).

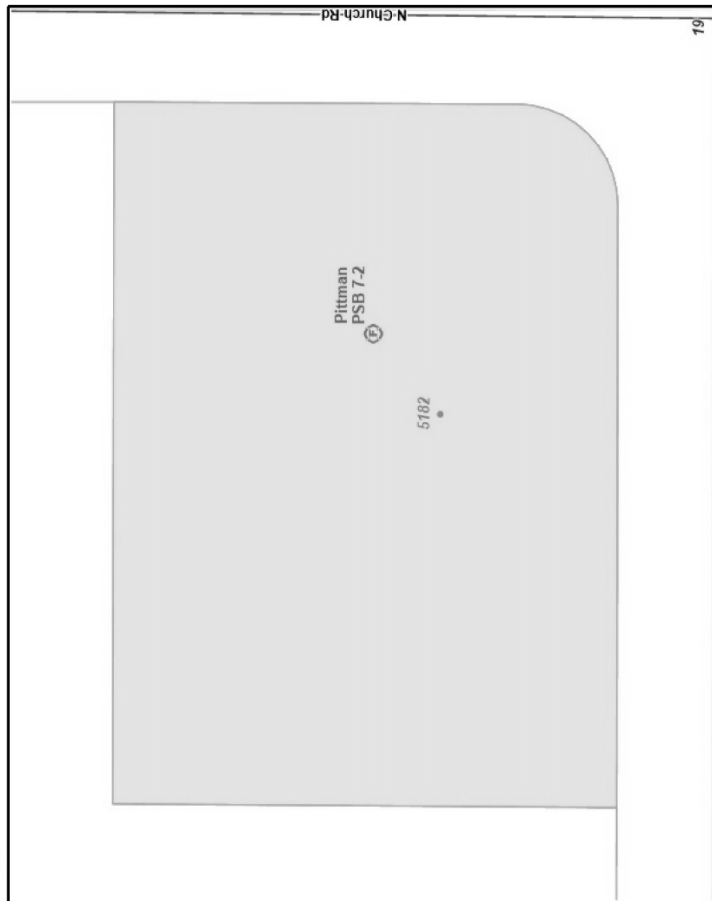
Comments: _____

Signature: _____

(If you need more space for comments please attach a separate sheet of paper.)
*This public notice & request for comments is in compliance with MSB Code 23.05.025



Matanuska-Susitna Borough Land Information Parcel Report



Selected parcel highlighted

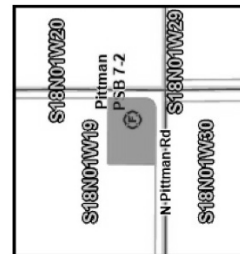
Account ID: 5256000T00A

Owner(s): MATANUSKA-SUSITNA BOROUGH
PSB/MEADOW LKS # 72

General Owner: BOROUGH

Legal Description: SAFETY SUBD

TRACT A



Parcel location within Matanuska-Susitna Borough

This map is solely for informational purposes only. The Borough makes no express or implied warranties with respect to the character, function, or capabilities of the map or the suitability of the map for any particular purpose beyond those originally intended by the Borough. For information regarding the full disclaimer and policies related to acceptable uses of this map, please contact the Matanuska-Susitna Borough GIS Division at 907-861-7838.

Report generated

9/11/2025 10:52:18 AM

