

Neklason Lake 2014 Data Summary

Neklason Lake Snapshot

Years Monitored: 8
 Total # of Events: 39
 2014 Events: 4
 Total Hours Monitored: 68.6

Observations

Wildlife Observed:

Bald eagle
 Belted kingfisher
 Jumping trout
 Loon
 Mallards
 Red-necked grebes, nesting
 Swallows

Water Level:

Medium to high

Water Color:

Light green
 Brownish
 Yellow/light tan

Algae:

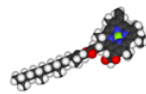
Sparse

Aquatic Plants:

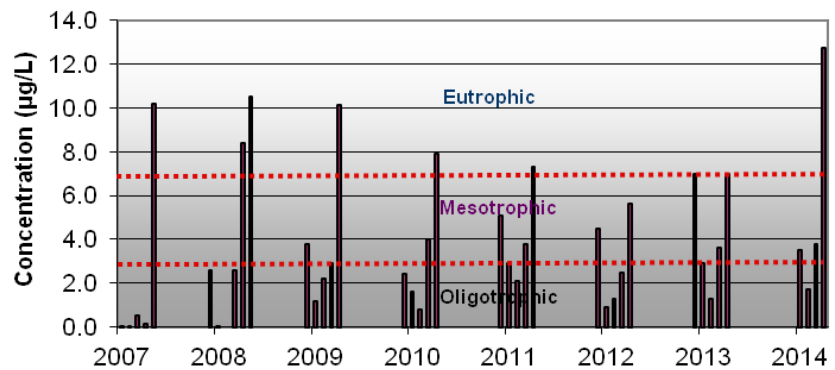
Sparse; pond lilies and
Chara spp.; east and west
 ends of the lake.

Additional Comments:

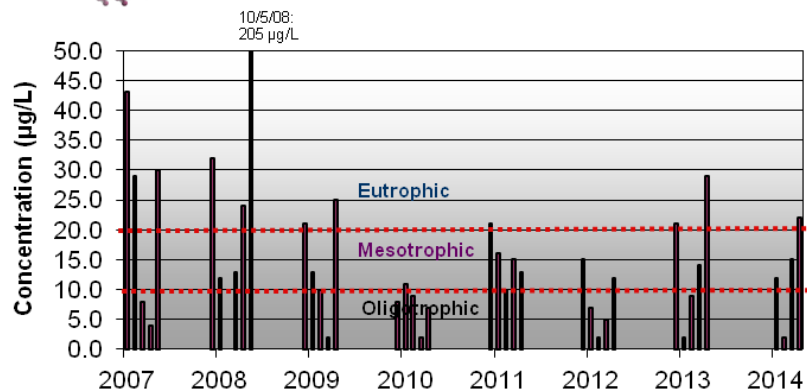
Big freshwater mussel shell
 came up with the anchor.



Neklason Lake • Chlorophyll a 2007-2014



Neklason Lake • Phosphorus 2007-2014



Neklason Lake Profile Measurements

Neklason		Depth (m)	Temperature (oC)	Conductivity (mS/cm)	Dissolved Oxygen (mg/L)	pH (SU)	Secchi Depth mean (m)
Date	9/28/2014	0.0	10.17	0.209	10.28	8.43	1.88
		1.0	10.14	0.210	10.27	8.47	
Site Depth (m)	17.00	2.0	10.13	0.210	10.19	8.47	
		3.0	10.12	0.210	10.17	8.47	
Phosphorus (µg/L)	22.0	4.0	10.11	0.210	10.15	8.46	
		5.0	10.11	0.211	10.12	8.45	
Chlorophyll a (µg/L)	12.7	6.0	10.11	0.211	10.07	8.43	
		7.0	10.10	0.213	9.72	8.33	
		8.0	9.68	0.225	6.53	7.90	
		9.0	8.89	0.247	3.33	7.69	
		10.0	7.33	0.268	0.21	7.44	
		15.0	5.32	0.289	0.17	7.28	
Date	8/21/2014	0.0	17.57	0.193	11.31	8.44	2.93
		1.0	17.54	0.193	11.36	8.45	
Site Depth (m)	17.00	2.0	16.55	0.198	11.17	8.39	
		3.0	15.91	0.197	11.20	8.43	
Phosphorus (µg/L)	15.0	4.0	15.47	0.199	10.73	8.37	
		5.0	14.85	0.206	10.19	8.23	
Chlorophyll a (µg/L)	3.8	6.0	13.96	0.217	10.64	8.16	
		7.0	10.86	0.251	13.52	8.27	
		8.0	8.34	0.267	4.32	7.48	
		9.0	7.31	0.271	0.82	7.28	
		10.0	6.85	0.273	0.13	7.20	
		15.0	4.89	0.291	0.09	6.96	
Date	7/3/2014	0.0	19.13	0.183	11.28	8.64	6.20
		1.0	18.57	0.183	11.25	8.67	
Site Depth (m)	17.00	2.0	17.51	0.186	11.24	8.65	
		3.0	16.84	0.186	11.42	8.68	
Phosphorus (µg/L)	2.0	4.0	15.77	0.196	11.75	8.64	
		5.0	14.27	0.211	13.45	8.67	
Chlorophyll a (µg/L)	1.7	6.0	12.42	0.226	15.15	8.75	
		7.0	9.35	0.246	14.82	8.58	
		8.0	7.49	0.260	11.57	8.21	
		9.0	6.34	0.268	7.48	7.81	
		10.0	5.28	0.270	7.02	7.68	
		15.0	3.88	0.293	0.38	7.19	

Highlighted data does not meet Alaska Water Quality Standards (WQS)



Nesting red-necked grebe



Violet-green swallow

Neklason		Depth (m)	Temperature (oC)	Conductivity (mS/cm)	Dissolved Oxygen (mg/L)	pH (SU)	Secchi Depth mean (m)
Date	6/3/2014	0.0	13.87	0.197	12.87	8.86	4.15
		1.0	12.64	0.196	13.15	8.86	
Site Depth (m)	17.00	2.0	12.45	0.197	13.05	8.83	
		3.0	12.12	0.198	12.79	8.81	
Phosphorus (µg/L)	12.0	4.0	11.88	0.199	12.64	8.78	
		5.0	11.15	0.208	13.19	8.71	
Chlorophyll a (µg/L)	3.5	6.0	9.33	0.230	16.36	8.76	
		7.0	6.58	0.253	15.22	8.57	
		8.0	5.54	0.264	12.02	8.16	
		9.0	4.81	0.269	6.04	7.78	
		10.0	4.25	0.274	0.24	7.54	
		15.0	3.65	0.285	0.09	7.33	
ChIA	TP	Depth	T°	Cond	DO	pH	Secchi
12.7	22.0	17.00	19.13	0.293	16.36	8.86	6.20
1.7	2.0		3.65	0.183	0.09	6.96	1.88
3.7	13.5		10.13	0.211	10.69	8.43	3.54
5.4	12.8		10.78	0.228	9.19	8.22	3.79
4.9	8.3		4.32	0.034	4.76	0.54	1.86

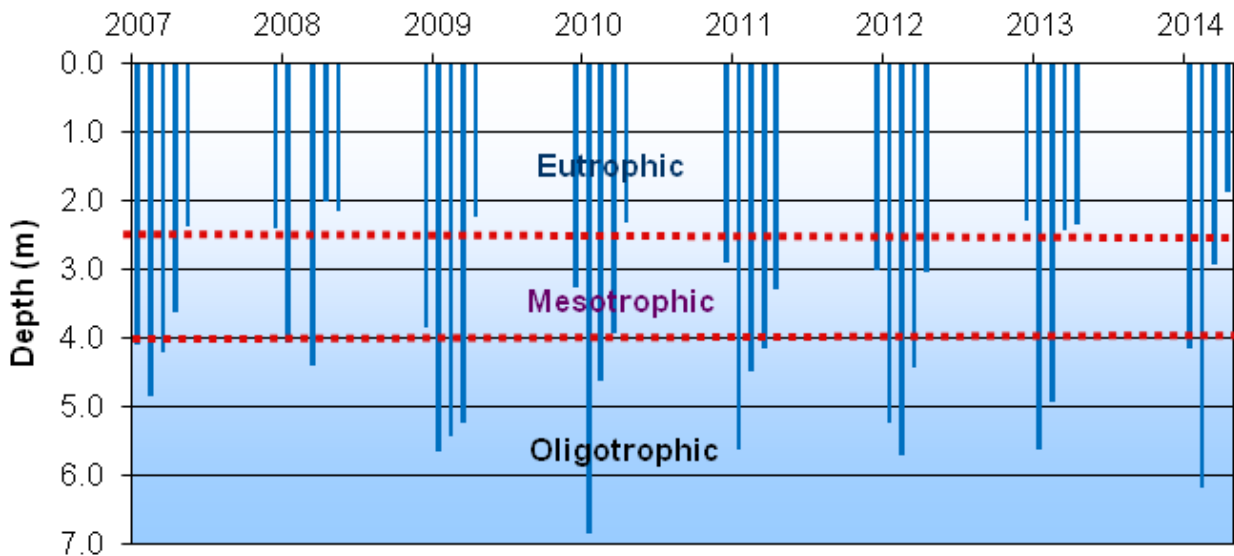
Max
Min
Med
Ave
StDev

Highlighted data does not meet Alaska Water Quality Standards (WQS)

The Alaska Water Quality Standards do not apply absolutely to lakes without taking multiple factors into account. For more information on WQS, please see <http://www.dec.state.ak.us/water/wqsar/wqs/>.

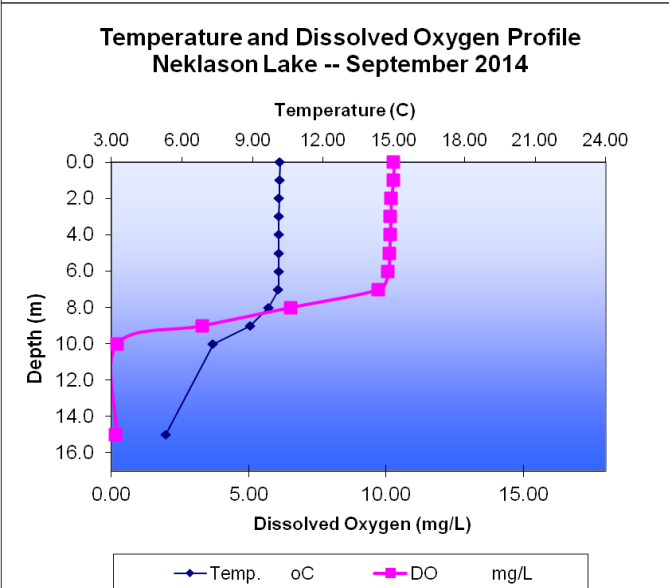
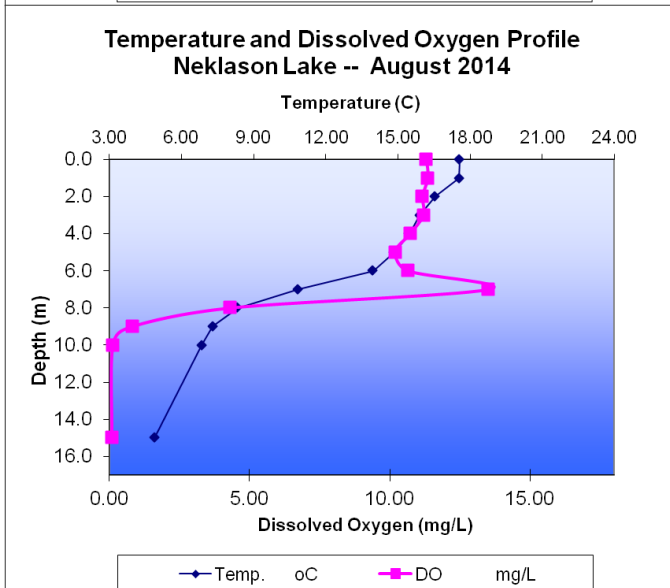
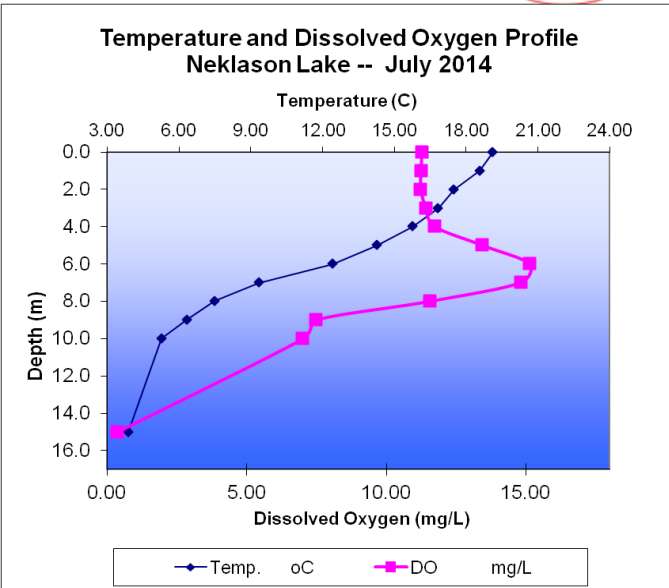
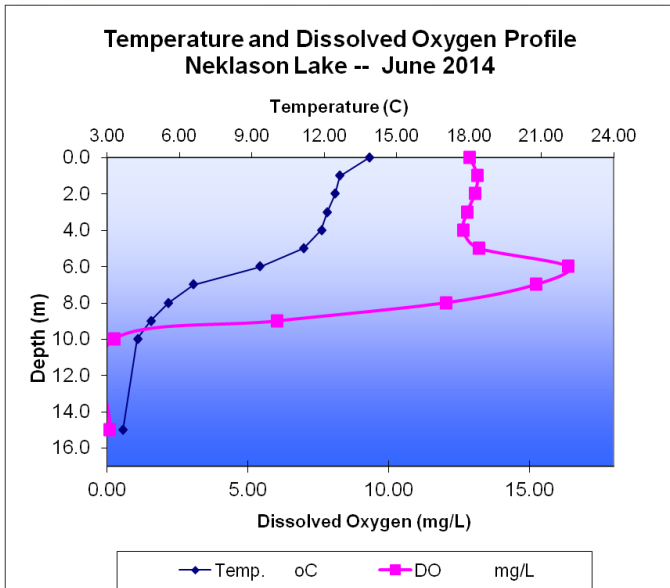


Neklason Lake • Secchi Data 2007-2014



Jumping trout

Matanuska-Susitna Borough Volunteer Lake Monitoring Program



Freshwater mussel *Anodonta* spp. from the anchor



Bald eagle