

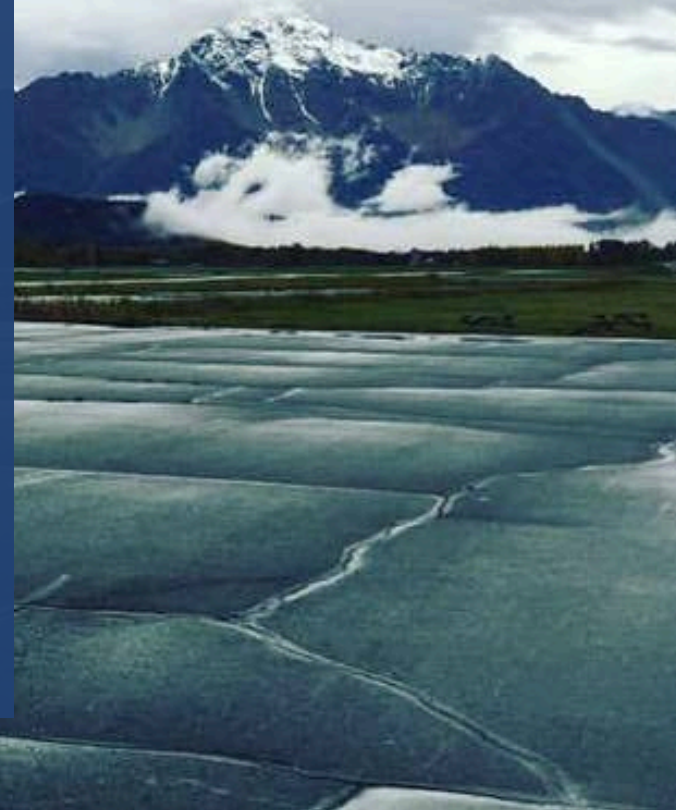
MAT-SU BOROUGH EMERGENCY MEDICAL SERVICES

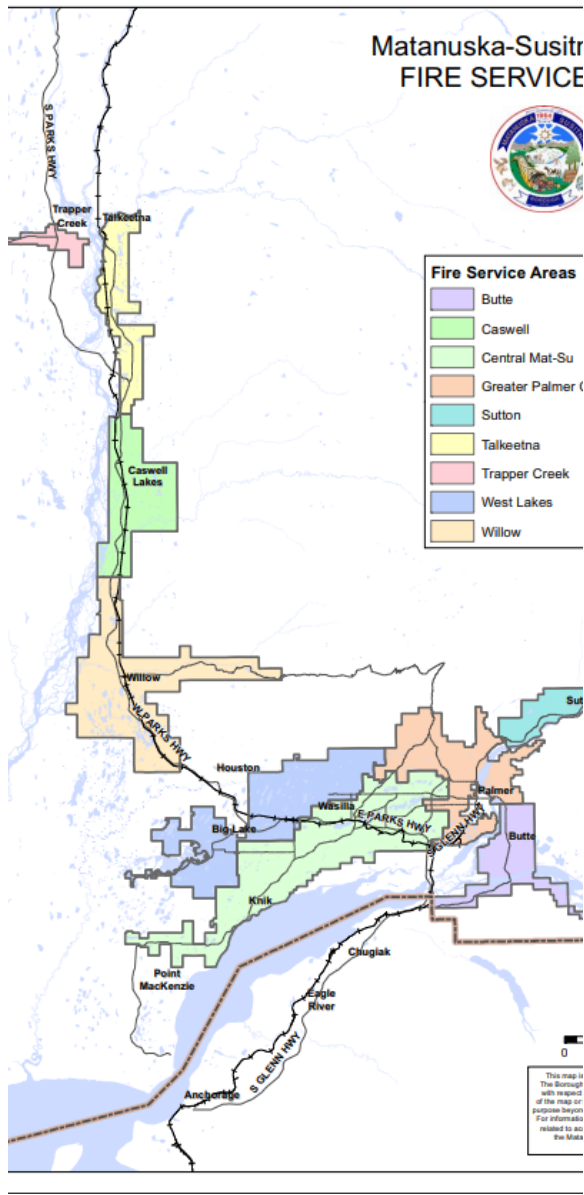
RE-ORGANIZATION PROPOSAL – 2019



OVERVIEW

- History
 - 25,258 square miles
 - Population 106,532 (2018)
 - Mix of commercial, rural and super-rural
 - EMS call volume more than double since 2010
 - Traditional Model (Volunteer / On-Call based) stressed
 - Unpredictable scheduling.
 - Inconsistent compliance and competence
- Impact
 - Availability limited to four staffed ambulances
 - Low return on recruiting / training investment





GROWTH & DISTRIBUTION

- **All populations areas of the Borough are increasing at 2 – 4 times the state average.**
- In the last 25 years, Mat-Su has averaged 3.4% growth / year, versus 1.2% for the state.
- “We project the strongest growth for the Anchorage/Mat-Su Region, with Matanuska-Susitna Borough’s population projected to increase by more than 80 percent over the period.”

SANDBERG, E. (2016, MARCH). SETTLEMENT OF THE MAT-SU: HOW ALASKA'S FASTEST GROWING BOROUGH CAME TO BE. ALASKA ECONOMIC TRENDS, PP. 12-17. RETRIEVED FROM [HTTP://LABOR.ALASKA.GOV/TRENDS/MAR16.PDF#ART2](http://labor.alaska.gov/trends/mar16.pdf#art2)

ALASKA DEPARTMENT OF LABOR AND WORKFORCE DEVELOPMENT. (2016). ALASKA POPULATION PROJECTIONS: 2015 TO 2045. RETRIEVED FROM [HTTP://LIVE.LABORSTATS.ALASKA.GOV/POP/PROJECTIONS/PUB/POP PROJ.PDF](http://live.laborstats.alaska.gov/pop/projections/pub/popproj.pdf)



Mat-Su Borough -
17% population
growth over ten
years.

79% increase
in EMS calls
Borough-wide



Future - 80%
projected population
growth in next 25
years

353%
increase in
EMS calls
Borough-wide



**Population growth of 3% / year =
est. 14% increase in EMS call
volume / year.**

TRANSLATION
: 2010 – 2018

79%
INCREASE IN
EMS CALLS
BOROUGH-
WIDE

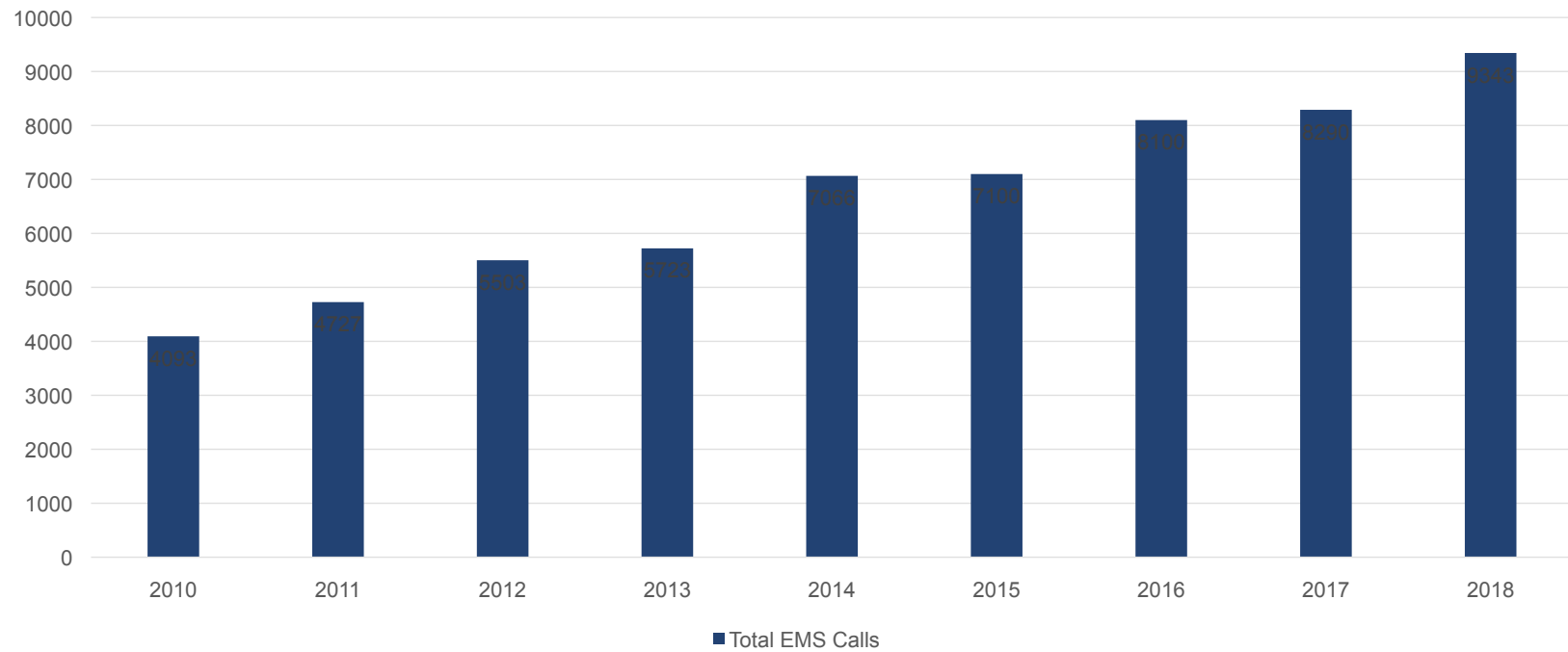
HOW MANY CALLS DOES THAT EQUAL?

Area	2007	2018	Increase
Central	2858	4838	69%
Palmer	1098	1677	53%
Lakes	541	1778	229%
Butte	303	371	22%
Sutton	108	152	41%
Willow	142	208	46%
Talkeetna	93	188	102%
Trapper Creek	85	131	54%
TOTALS:	5228	9343	79%

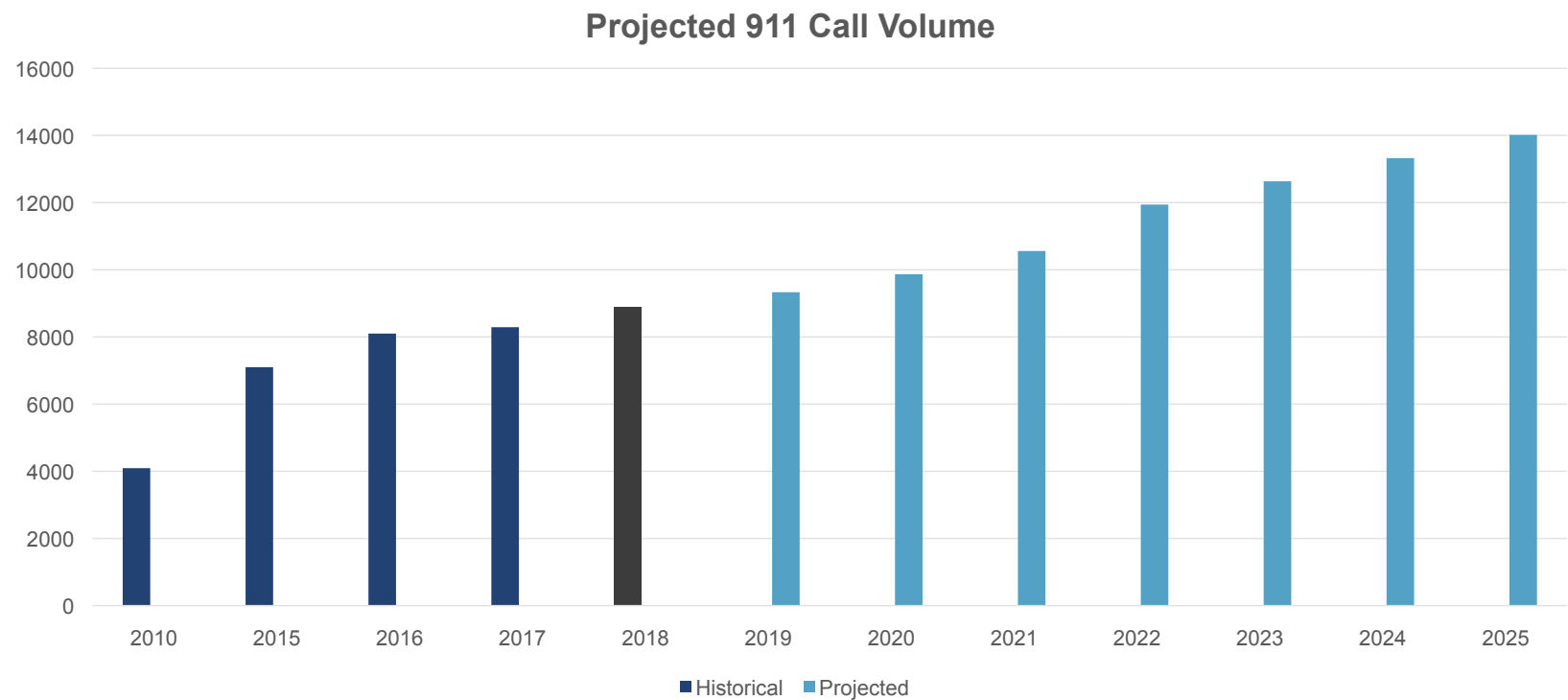
OPERATIONS TEMPO

Year	Daily Call Volume
2010	11 / day
2018	26 / day
Increase	136%

Total EMS Calls



HOW MANY MORE CALLS NEXT YEAR?





SURGE FACTORS

- Multiple Casualties (MVCs)
- Natural Disasters
 - Fire / Earthquake / Flood
- ALF / SNF – Senior Housing
 - Maple Springs, Sun Mountain
- Tourism (> 350,000 / year)
 - Alaska State Fair
 - Skeetawk Ski Area
 - Princess
- Commercial growth





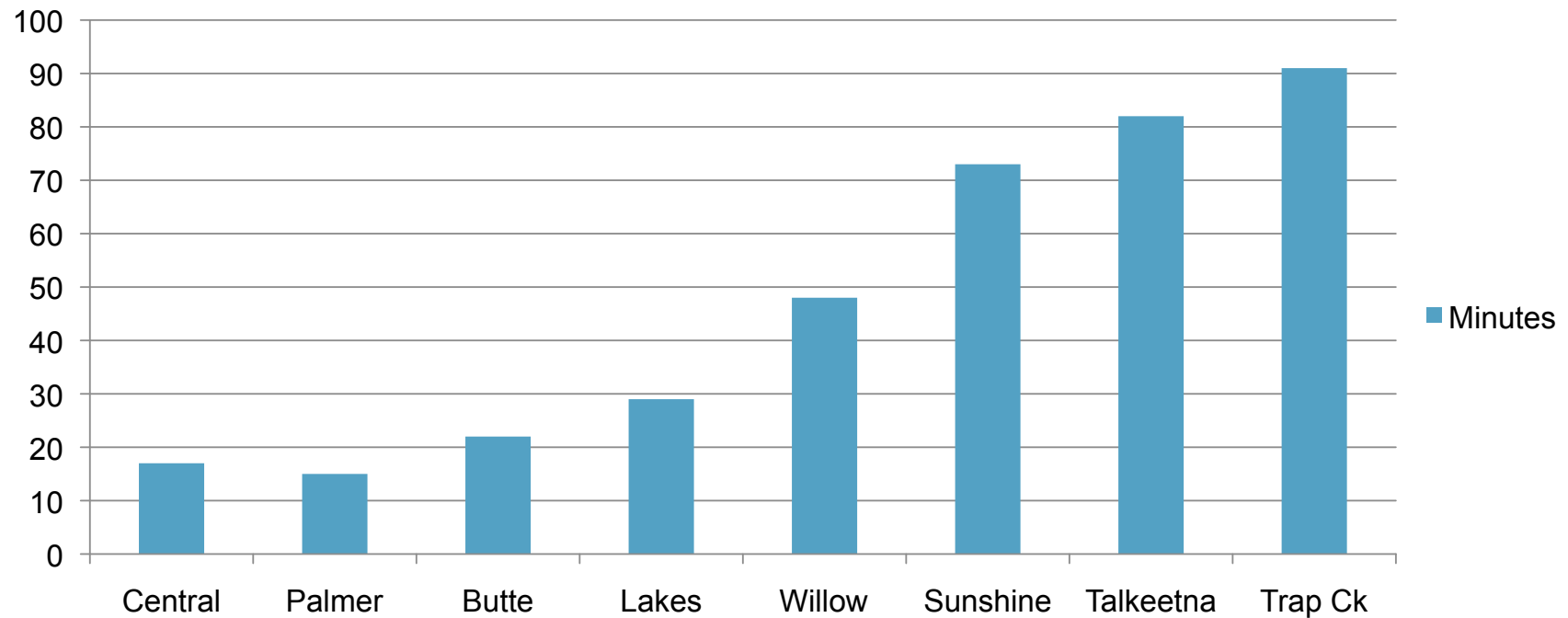
MITIGATION

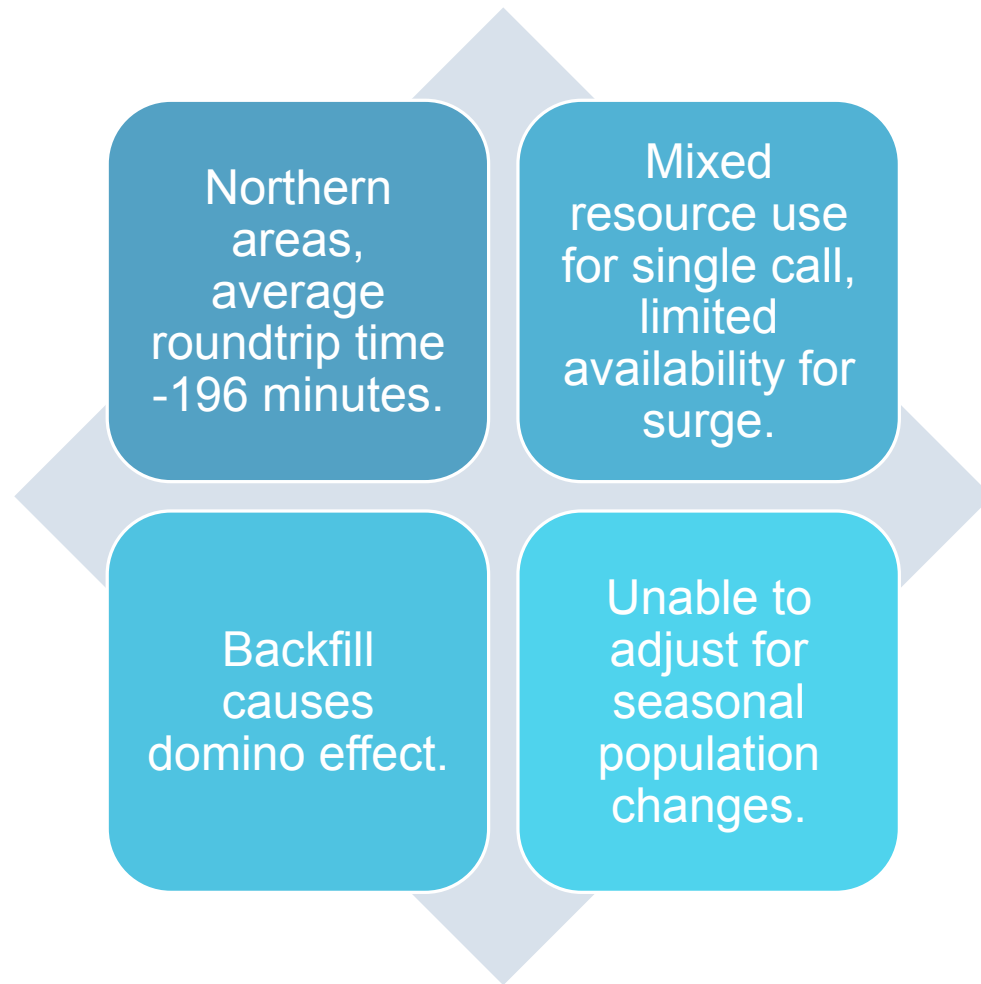
- Are there ways to reduce the number of calls?
 - MSRMC – HUMS
 - CIT
 - MSHF – Community Paramedicine
 - MS Senior Services



HOSPITAL TRANSPORT TIMES

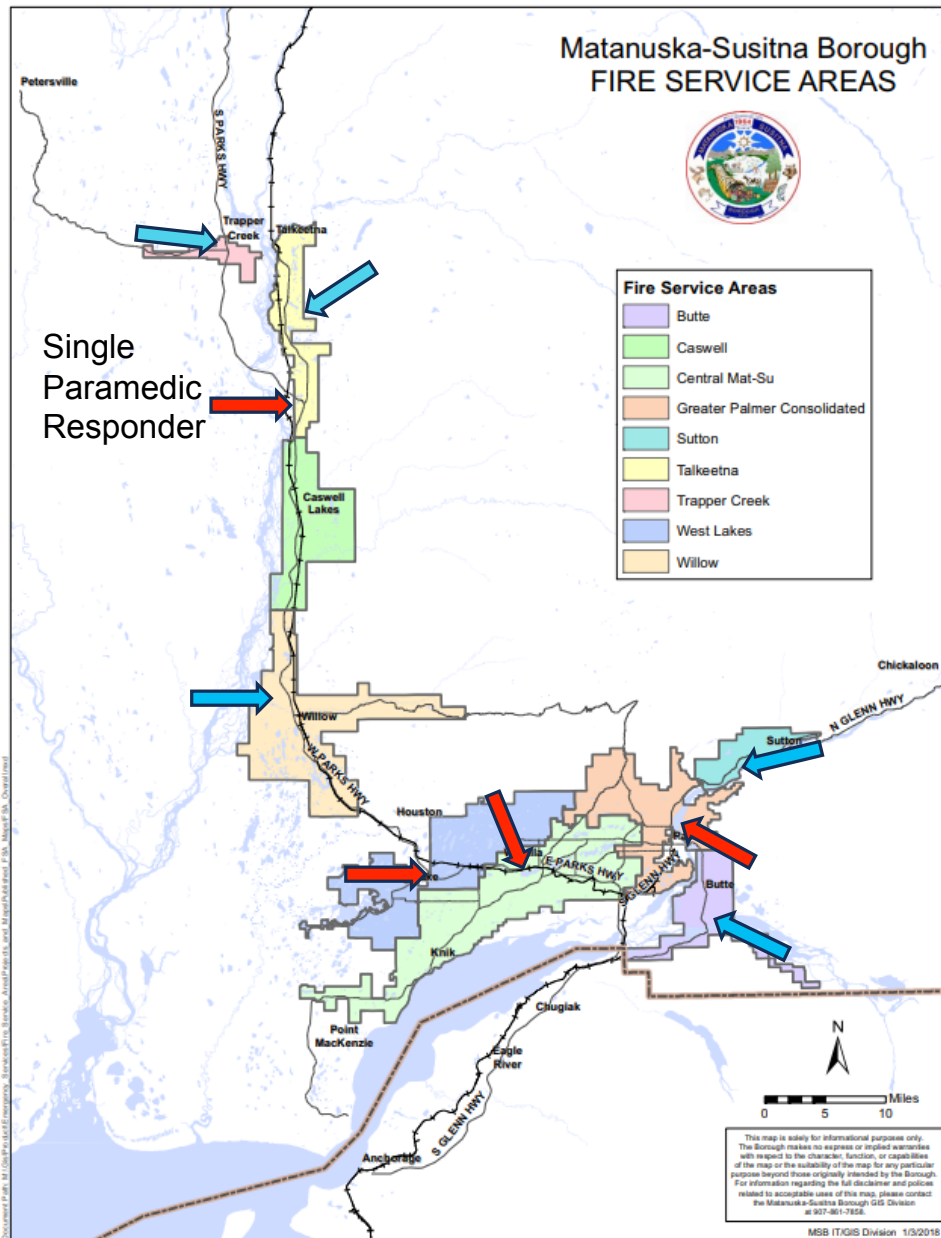
One Way + Patient Care





THE TYRANNY OF DISTANCE

WHY THIS MATTERS



RED –
STAFFED

BLUE – OC

WHAT DOES IT TAKE?



No Previous Experience

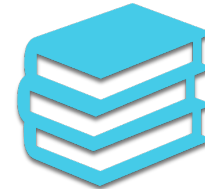
EMT Class – 120 hours

CPR – 4 hours

CEVO – 8 hours

Internship – 240 hours

Total Time – 6 Months



Training Requirements*

EMT – 48 hours

Paramedic – 120 hours

****These represent minimum requirements only,
and do not account for any individual
availability or additional agency training
requirements.***

THE ASK

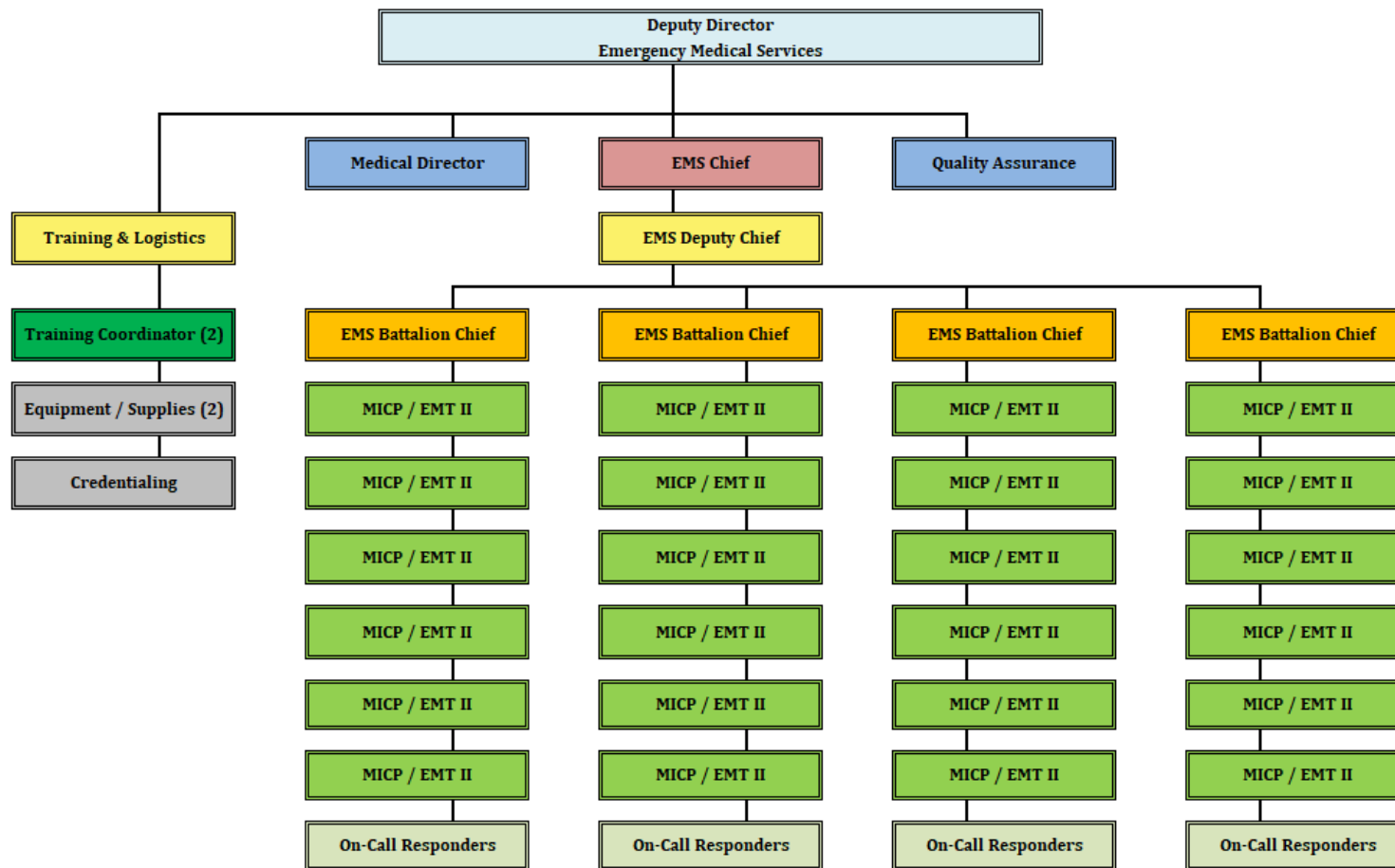
- Hire 17 EMT-2s
- Hire 8 Paramedics
- Convert parts of the OT and OCR budget into wages / benefits.
- Maintain the paid On-Call system.



THE RESULT



ORGANIZATIONAL STRUCTURE



IS IT ENOUGH?

- Call volume will continue to increase.
- Advance planning now will save lives.
- Our responders need support.





QUESTIONS?

