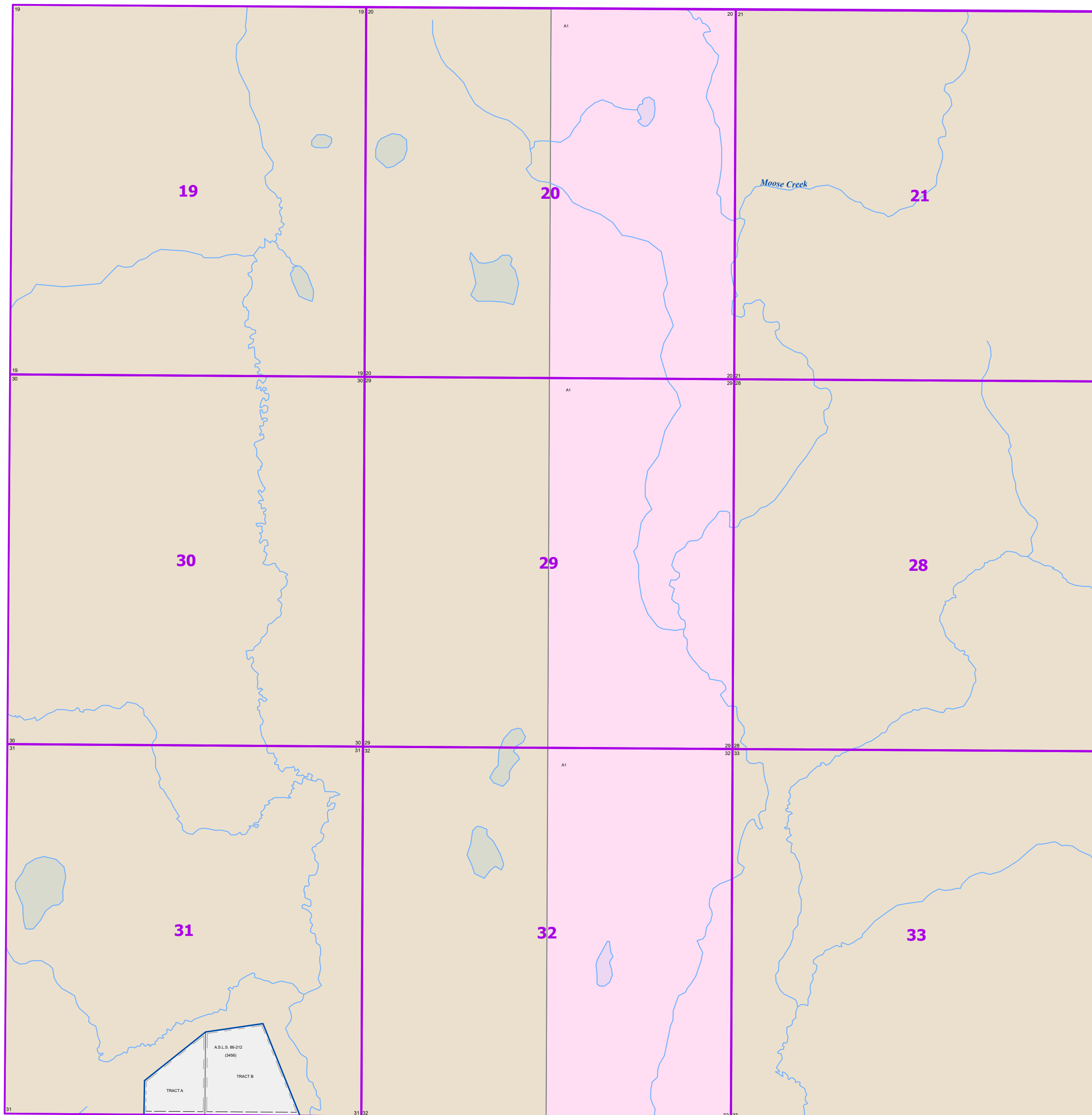




Matanuska - Susitna Borough



Legend	
	Section Grid
	City Boundary
	Subdivision Boundary
ParcelType	
	Subdivision Lot
	Tax Parcel
	Mineral Survey
	Multi Unit
	Surveyed
	Utility
	Agency
	Building Only
	Other
	US Survey
	Government Lot Line
	Mileposts
7	Subdivision or Government Lot Number
(1)	Subdivision Block Number
SUBD	Subdivision Name
(####)	Subdivision Number
A15	Tax Parcel Number
7	Section Number
N/C	Non-Conforming Parcel
Easements	
	Easement
	MSB Right-of-Way
	MSB Travelled Way
	Railroad
	Right-of-Way ESMT
	Section Line ESMT
	Waterbody
	Stream



Source: This map was compiled using a variety of sources including, but not limited to, Recorded Subdivision Plats, U.S. Surveys, Alaska State Land Surveys, Bureau of Land Management Survey Plats, Alaska DOT Right of Way Plats, Public Use Easements, Deeds, and other recorded documents. This map is solely an index of property records and is not intended to be used in lieu of the recorded documents or a survey prepared by a Registered Land Surveyor. All information on this map is subject to field verification.

Projection: Data is modeled in State Plane Coordinate Feet, Alaska Zone 4, using North American Datum of 1983.

Matanuska-Susitna Borough
Information Technology Dept.
Geographic Information System
350 E. Dahlia Avenue
Palmer, Alaska 99645
Phone: (907) 861-7858
E-Mail: Service.Desk@matsugov.us

This map was created by the Matanuska-Susitna Borough ("Borough") with the intent of using the map for local government related activities, and not necessarily with the intent of the use of the map recipient ("Recipient") in mind. By nature, maps are a graphical representation of the real-world conditions, with issues of accuracy, resolution, and thematic display determined with the anticipated use of the map in mind. Although the Borough strives to maintain an accurate and precise inventory of maps in order to perform government-related tasks, this map may contain errors, may not be current, and may omit important information. This map is solely a representation of real-world conditions and is made available to the Recipient for informational purposes only. THE BOROUGH MAKES NO EXPRESSED OR IMPLIED WARRANTIES WITH RESPECT TO THE CHARACTER, FUNCTION OR CAPABILITIES OF THE MAP OR THE SUSTAINABILITY OF THE MAP FOR ANY PARTICULAR PURPOSE BEYOND THOSE ORIGINALLY INTENDED BY THE BOROUGH. The Borough is not liable for any direct or indirect damages suffered related to the use of the map including, but not limited to, physical injury, death, property damage, economic loss, or other consequential damages suffered by the Recipient, or other, arising from any inadequacies of the map or the Recipient's use of the map. In no event will the Borough's liability to the recipient or anyone else exceed the fee paid for the map product.

© Matanuska-Susitna Borough 2019

PORTION OF
PETERSVILLE
T. 27 N., R. 06 W., .M.
SEC. 19,20,21,28,29,30,31,32,33